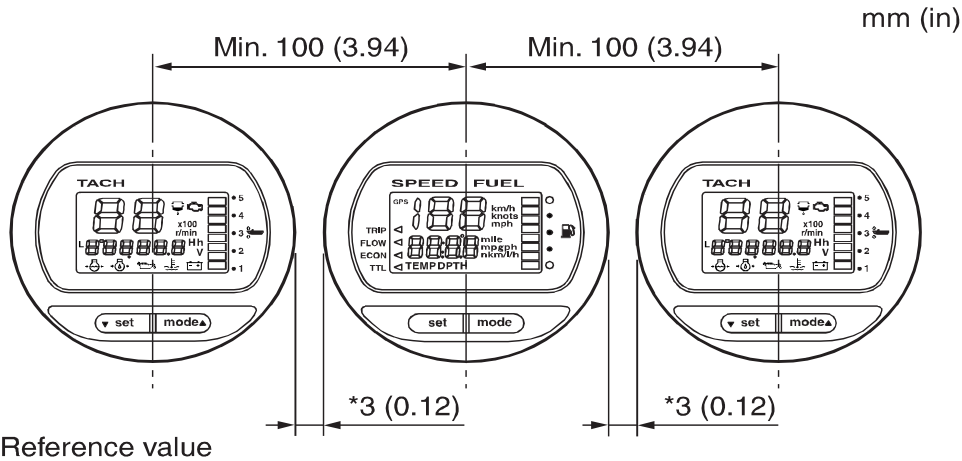


**COMMAND LINK  
MULTIFUNCTION METER  
(ROUND)  
QUICK INSTALLATION MANUAL**

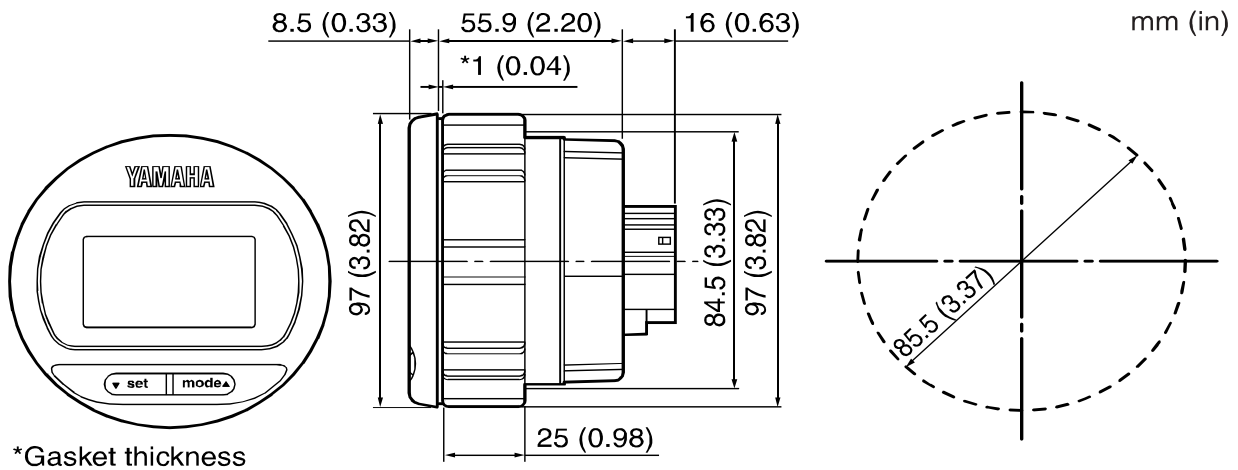
**6Y8-2819K-R0**

## Meter

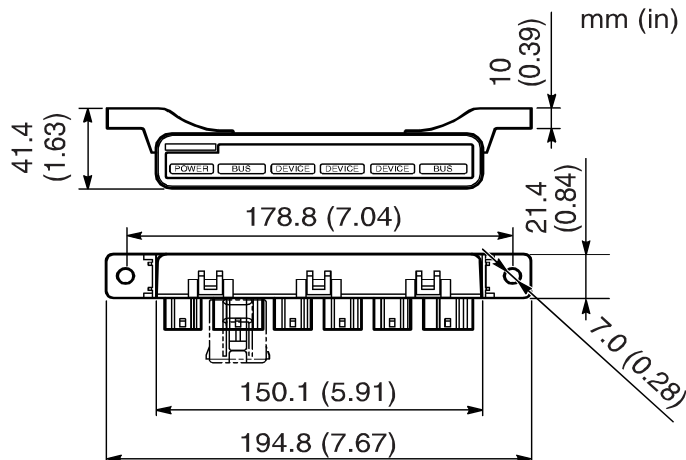


Install the meters 100 mm (3.94 in) or more from center to center of each meter.  
If installed closer than specification, the ring nuts can interfere with each other and prevent tightening.

## Surface mount

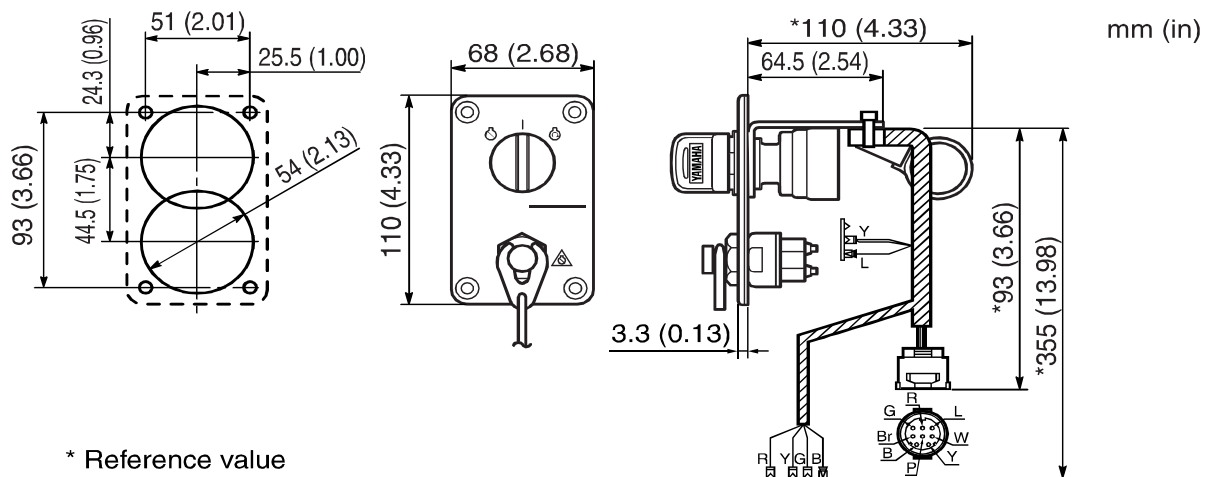


## Multi hub assy

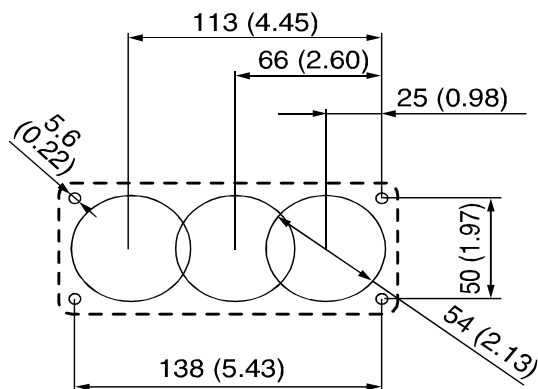
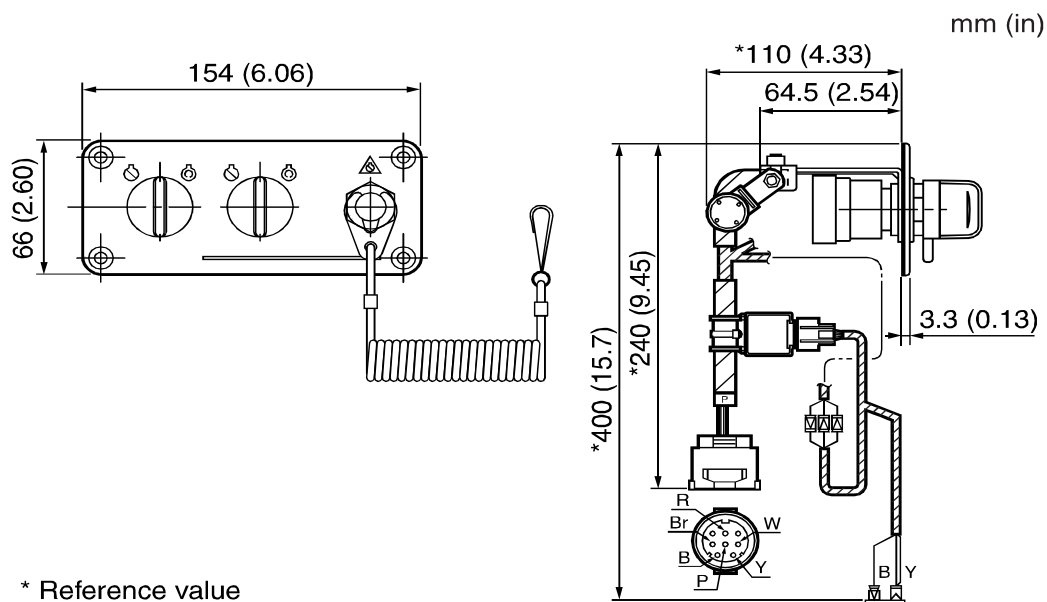


## Switch panel

### When installing single outboard motor



### When installing twin outboard motors



Wiring diagram

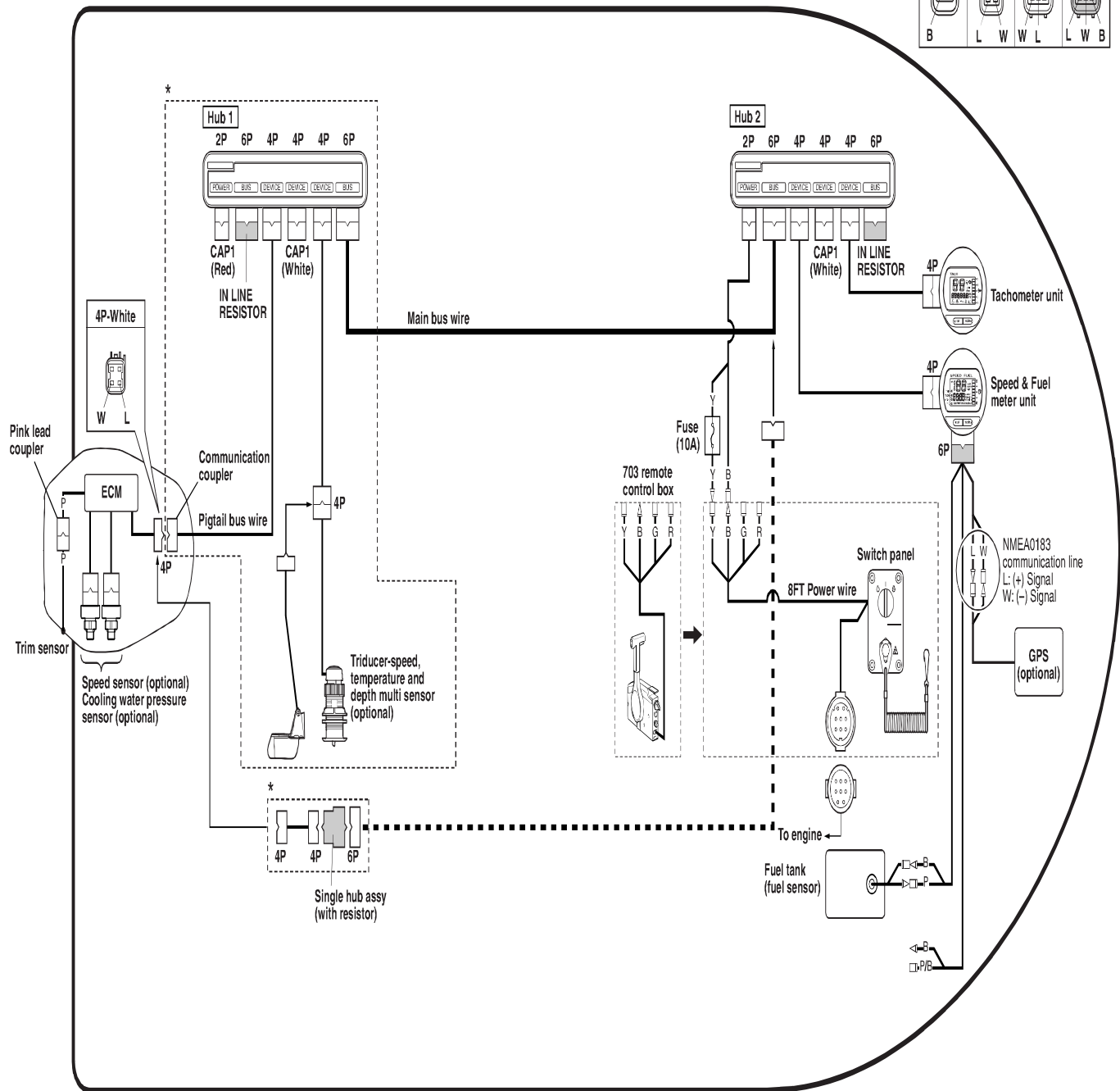
Single engine application

\*: A direct connection to the engine and hub 2 is possible when using a single hub assy (with resistor) instead of hub 1.

Color code:

- B..... Black
- L..... Blue
- P..... Pink
- R..... Red
- W..... White
- Y..... Yellow
- P/B ..... Pink/black

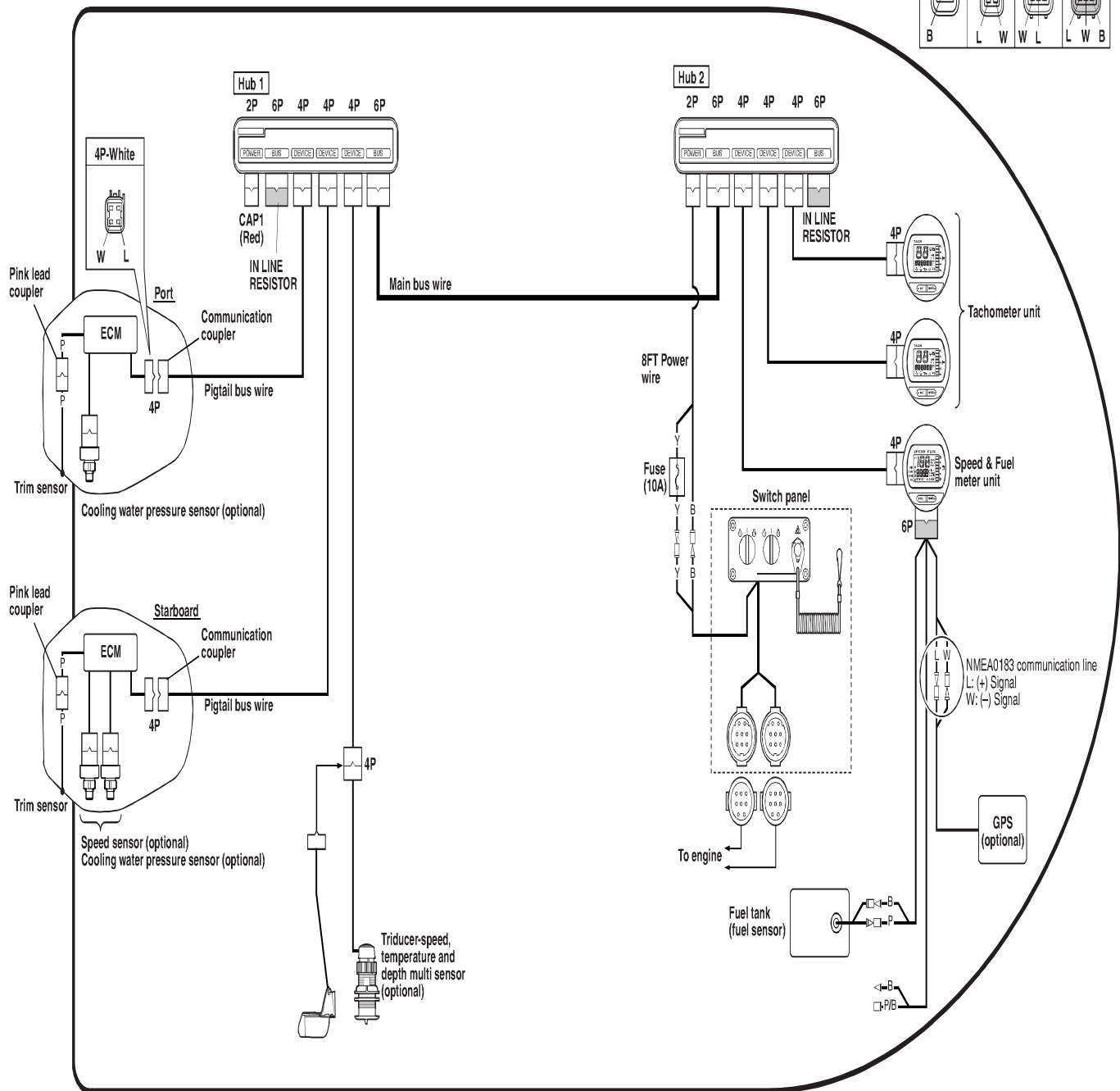
2P-Red	4P-White	6P-Gray	6P-Black
Y	B	R	P/B
B	L	W	L
			W
			B



Twin engine application

Color code:  
B..... Black  
L..... Blue  
P..... Pink  
R..... Red  
W..... White  
Y..... Yellow  
P/B ..... Pink/black

2P-Red	4P-White	6P-Gray	6P-Black
Y	B	R	P/B
B	L	W	L
			W
			B
			P



## Installation and connection precautions

When installing and wiring the meter components or connecting the meter to the engine, be sure to use the wiring diagram as reference and note the following points.

### Installing the meters

- Install the meters in a location that they will not be subjected to water such as from waves.
- When installing the meters to the panel, be sure to use the supplied ring nuts so that the meters are fastened securely. Be sure to tighten the ring nuts so that they are straight.
- The meters can be installed into panels with a thickness of 1–27 mm (0.04–1.06 in). If the panel thickness is 13 mm (0.51 in) or more, install the ring nuts in reverse.
- The 6-pin connector of the speedometer is for the external signal input. Be careful not to connect the **BUS WIRE** to this connector.
- When two outboard motors are installed, use the specified switch panel.
- When the panel is not flat or its thickness is uneven, install the meters with the optional fitting plate (6Y8-83514-0\*) between the panel and the ring nuts.

### Installing and wiring the hub

- Install the **multi hub assy** and **single hub assy** in a location that it will not be subjected to water such as from waves or be submerged in the bilge.
- Install the **multi hub assy** connectors facing down and so that the meter is level.
- Install the **multi hub assy** and **single hub assy** in a location where the ambient temperature does not exceed 80 °C (176 °F).
- Do not install the **multi hub assy** and **single hub assy** in a location that it will be easily stepped on or where it will be an obstacle.
- Install the **multi hub assy** and **single hub assy** 30 cm (1 ft) away from a two-way radio, antenna cable, and generator.
- Be careful not to bind together the wiring harness of this system and the antenna cable.
- Install the **multi hub assy** by installing bolts or screws in the two flange sections so that there is no rattling.
- Be sure to connect the **resistor** to both **BUS WIRE** ends.
- Be sure to cover all **multi hub assy** connectors that are not being used with a waterproof cap (2-pin connector: 6Y8-82582-0\*, 4-pin connector: 6Y8-82582-1\*).
- Do not install the **single hub assy**, which is connected directly to the main bus wire and engine communication line, onto the outboard motor. Be sure to wire the **single hub assy** so that it can be installed on the boat.
- Wire the power source so that it is located in one location. Be sure to connect the power wire to only one **multi hub assy**. Do not supply power to multiple **hubs**.
- Do not bend the water-resistant heat shrinkable tube of the main bus wire (6Y8-82553-\*\*) and the pigtail bus wire (6Y8-82521-\*\*) 45° or more.
- Install the wiring harnesses so that they do not come into contact with the edges and moving parts that can damage shearing. Do not apply excessive force to pull on the wiring harnesses when routing them.
- Do not kink or bend the main bus wire or the pigtail bus wire less than the minimum bend radius: 10 mm (0.39 in).