

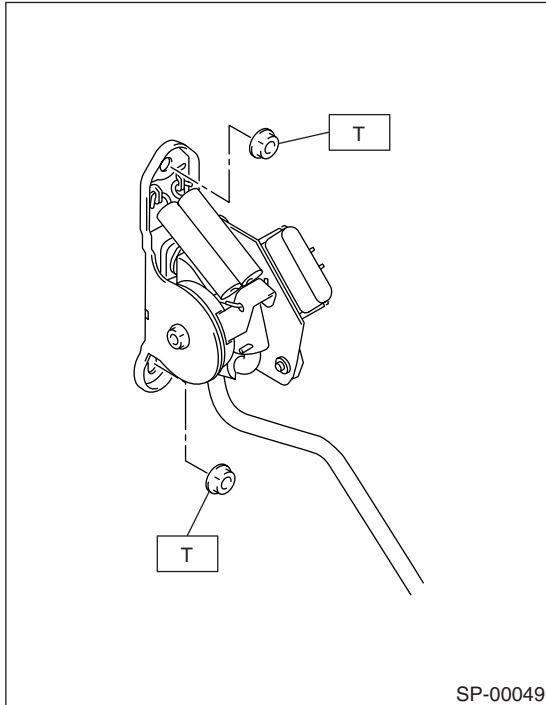
ACCELERATOR PEDAL

SPEED CONTROL SYSTEMS

2. Accelerator Pedal

A: REMOVAL

- 1) Disconnect the ground cable from battery.
- 2) Disconnect the connector.
- 3) Remove the nuts which securing accelerator pedal assembly.



B: INSTALLATION

Install in the reverse order of removal.

Tightening torque:

18 N·m (1.8 kgf·m, 13.0 ft·lb)

C: DISASSEMBLY

NOTE:

Accelerator pedal for turbo model is a non-disassemble part.