

GENERAL DESCRIPTION

STARTING/CHARGING SYSTEMS

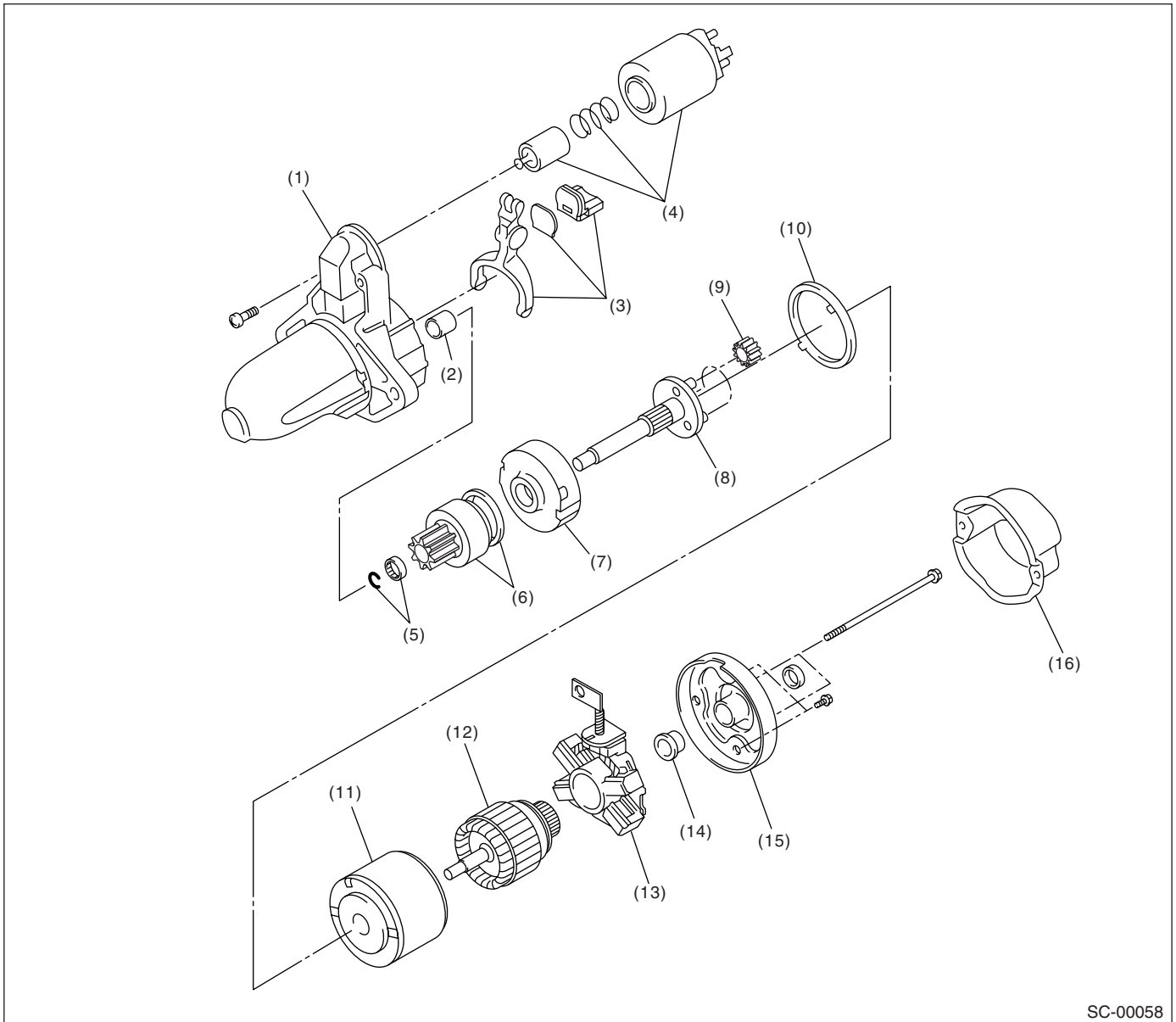
1. General Description

A: SPECIFICATIONS

Item		Designation		
Starter	Type	Reduction type		
	Vehicle type	MT vehicles	AT vehicles	
	Model	M000T30471	M000T20171	
	Manufacturer	Mitsubishi Electric		
	Voltage and output	12 V — 1.0 kW	12 V — 1.4 kW	
	Direction of rotation	Counterclockwise (viewed from pinion gear side)		
	Number of pinion teeth	8	9	
	No-load characteristics	Voltage	11 V	
		Current	95 A or less	90 A or less
		Rotating speed	2,500 rpm or more	2,000 rpm or more
	Load characteristics	Voltage	7.5 V	7.7 V
		Current	300 A	400 A
		Torque	8.84 N (0.90 kgf, 1.99 lb) or more	16.7 N (1.70 kgf, 3.75 lb) or more
		Rotating speed	870 rpm or more	710 rpm or more
	Lock characteristics	Voltage	4 V	3.5 V
		Current	680 A or less	960 A or less
Torque		17 N (1.73 kgf, 12.5 lb) or more	31 N (3.16 kgf, 22.9 lb) or more	
Generator	Type	Rotating-field three-phase type, Voltage regulator built-in type, with load response control system		
	Model	A002TB2891		
	Manufacturer	Mitsubishi Electric		
	Voltage and output	12 V — 90 A		
	Polarity on ground side	Negative		
	Rotating direction	Clockwise (viewed from pulley side)		
	Armature connection	3-phase Y-type		
	Output current	1,500 rpm — 36 A or more		
		2,500 rpm — 65 A or more		
5,000 rpm — 86 A or more				
Regulated voltage	14.1 — 14.8 V [20°C (68°F)]			
Battery	Voltage and output	MT: 12 V — 48 AH (55D23L)		
		AT: 12 V — 52AH (75D23L)		

B: COMPONENT

1. STARTER



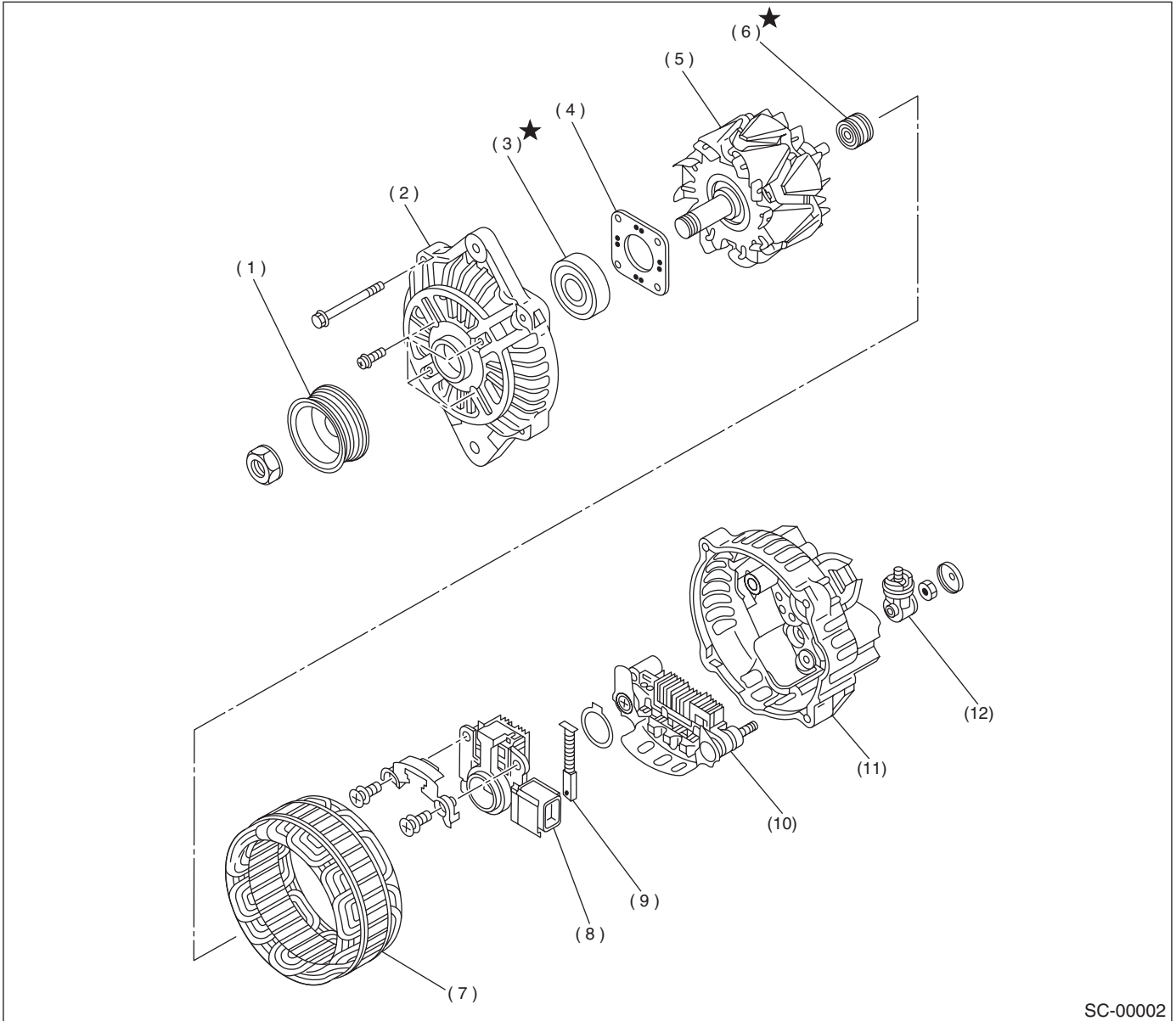
SC-00058

- | | | |
|-------------------------|------------------------|------------------------|
| (1) Front bracket | (7) Internal gear ASSY | (13) Brush holder ASSY |
| (2) Sleeve bearing | (8) Shaft ASSY | (14) Sleeve bearing |
| (3) Lever set | (9) Gear ASSY | (15) Rear cover |
| (4) Switch ASSY | (10) Packing | (16) Rear cover set |
| (5) Stopper set | (11) Yoke ASSY | |
| (6) Over running clutch | (12) Armature | |

GENERAL DESCRIPTION

STARTING/CHARGING SYSTEMS

2. GENERATOR



SC-00002

- | | | |
|----------------------|-----------------------------|-----------------|
| (1) Pulley | (5) Rotor | (9) Brush |
| (2) Front cover | (6) Bearing | (10) Rectifier |
| (3) Ball bearing | (7) Stator coil | (11) Rear cover |
| (4) Bearing retainer | (8) IC regulator with brush | (12) Terminal |

C: CAUTION

- Wear working clothing, including a cap, protective goggles, and protective shoes during operation.
- Remove contamination including dirt and corrosion before removal, installation or disassembly.
- Keep the disassembled parts in order and protect them from dust or dirt.
- Before removal, installation or disassembly, be sure to clarify the failure. Avoid unnecessary removal, installation, disassembly, and replacement.
- Be careful not to burn your hands, because each part in the vehicle is hot after running.
- Be sure to tighten fasteners including bolts and nuts to the specified torque.
- Place shop jacks or safety stands at the specified points.
- Before disconnecting electrical connectors of sensors or units, be sure to disconnect the ground cable from battery.