

GENERAL DESCRIPTION

ABS

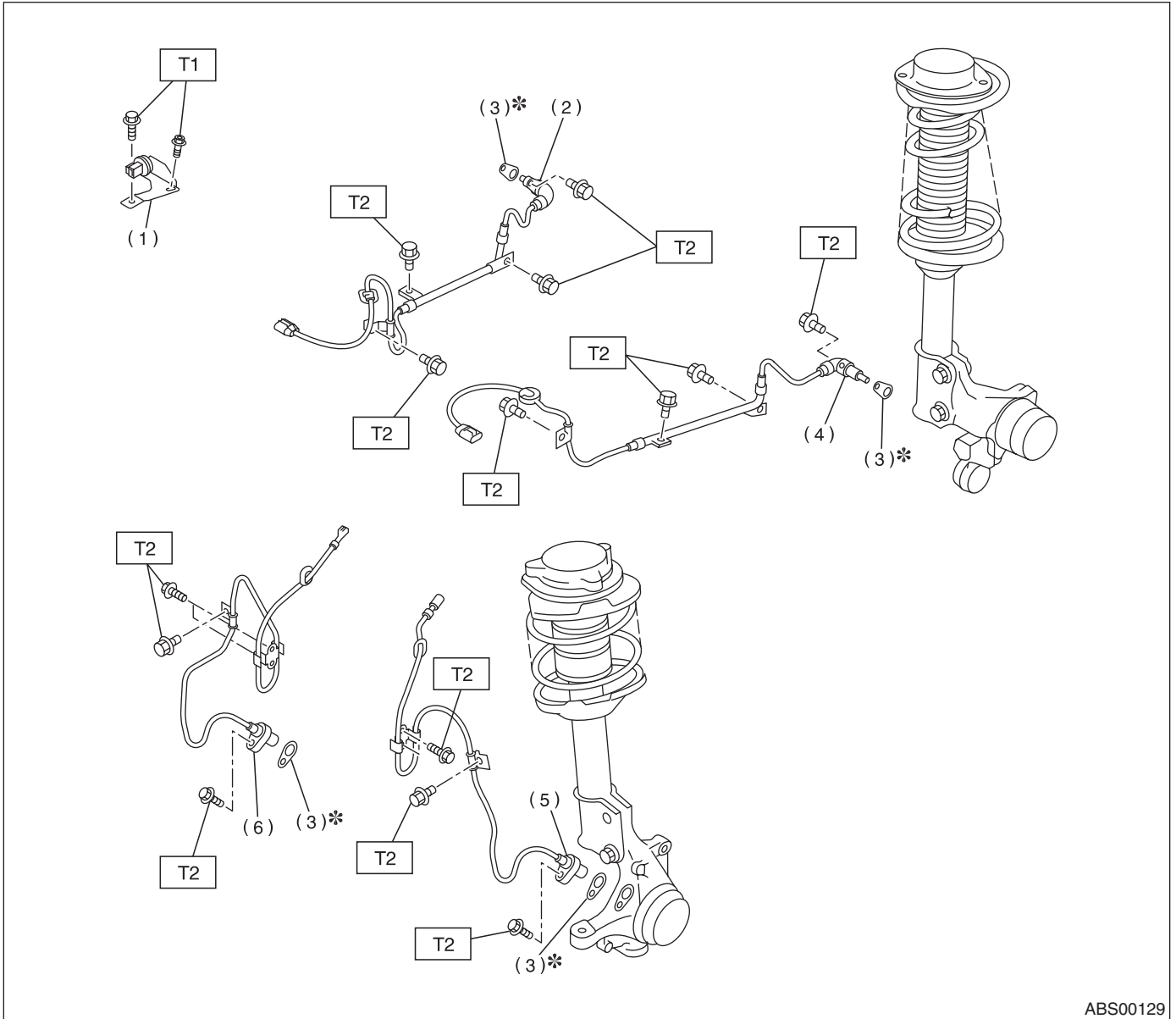
1. General Description

A: SPECIFICATIONS

Item			Standard or remarks	
ABS wheel speed sensor	ABS wheel speed sensor gap	Front	0.3 — 0.8 mm (0.012 — 0.031 in)	
		Rear	0.7 — 1.2 mm (0.028 — 0.047 in)	
	ABS wheel speed sensor resistance	Front	1.25±0.25 kΩ	
		Rear	1.15±0.115 kΩ	
	Marks of the harness	Front	RH	Light blue
			LH	Brown
Rear		RH	White	
		LH	Yellow	
G sensor	G sensor voltage		2.3±0.2 V	
ABSCM&H/U marks	AT		CO	
	MT		CP	

B: COMPONENT

1. SENSOR



ABS00129

- | | |
|--|--|
| <ul style="list-style-type: none"> (1) G sensor (2) Rear ABS wheel speed sensor RH (3) Adjusting spacer | <ul style="list-style-type: none"> (4) Rear ABS wheel speed sensor LH (5) Front ABS wheel speed sensor LH (6) Front ABS wheel speed sensor RH |
|--|--|

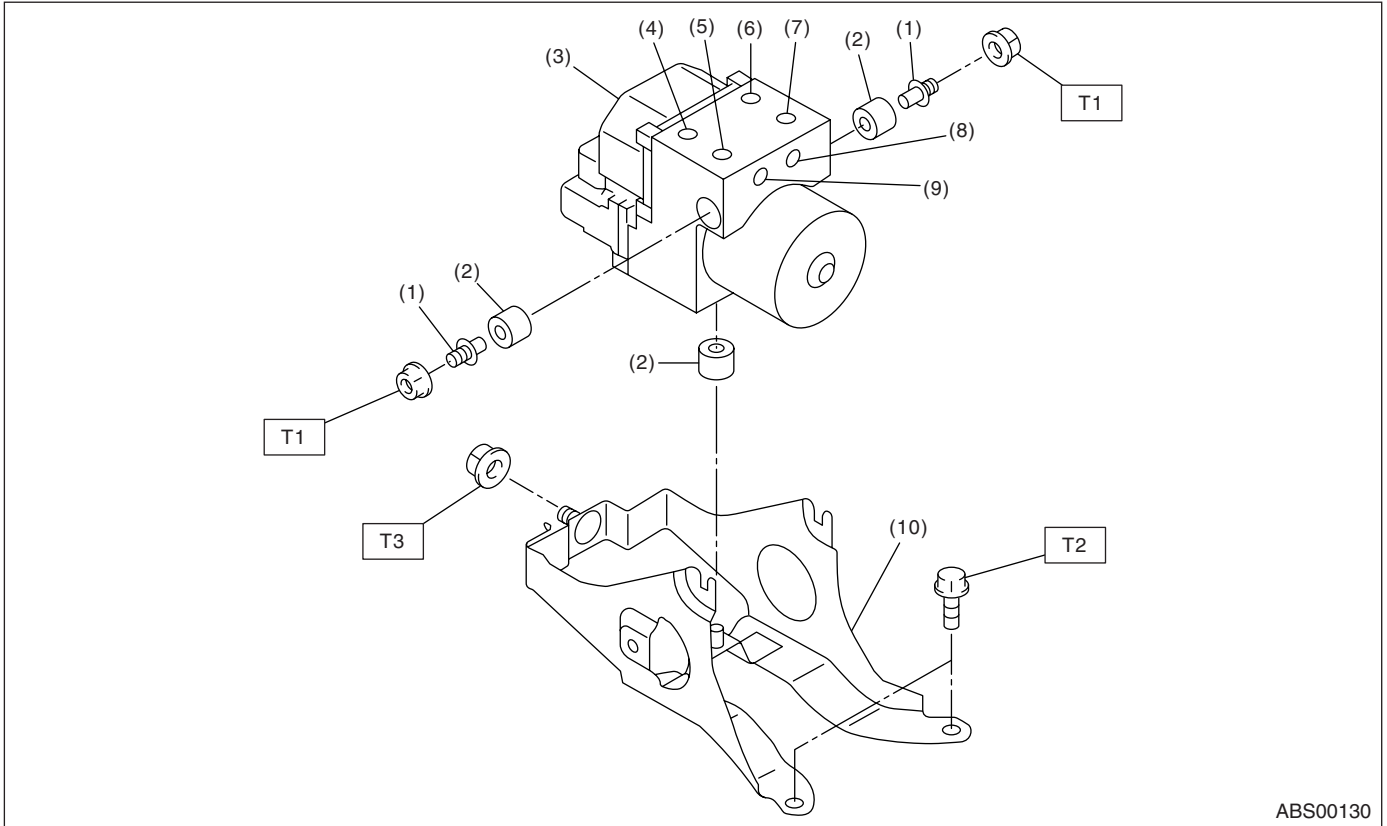
Tightening torque: N-m (kgf-m, ft-lb)

T1: 18 (1.8, 13.0)
T2: 33 (3.3, 24)

GENERAL DESCRIPTION

ABS

2. ABS CONTROL MODULE AND HYDRAULIC CONTROL UNIT (ABSCM&H/U)



- | | |
|---|---------------------|
| (1) Stud bolt | (6) Front-RH outlet |
| (2) Damper | (7) Primary inlet |
| (3) ABS control module and hydraulic control unit (ABSCM&H/U) | (8) Rear-LH outlet |
| (4) Front-LH outlet | (9) Rear-RH outlet |
| (5) Secondary inlet | (10) Bracket |

Tightening torque: N·m (kgf·m, ft·lb)

T1: 18 (1.8, 13.0)

T2: 33 (3.4, 24.6)

T3: 38 (3.8, 27.5)

C: CAUTION

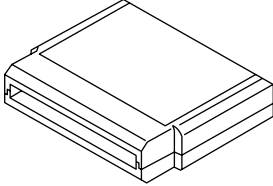

- Before disconnecting electrical connectors of sensors or units, be sure to disconnect the ground cable from battery.
- Wear working clothing, including a cap, protective goggles, and protective shoes during operation.
- Before removal, installation or disassembly, be sure to clarify the failure. Avoid unnecessary removal, installation, disassembly, and replacement.
- Be careful not to burn your hands, because each part in the vehicle is hot after running.
- Be sure to tighten fasteners including bolts and nuts to the specified torque.
- Place shop jacks or safety stands at the specified points.

GENERAL DESCRIPTION

ABS

D: PREPARATION TOOL

1. SPECIAL TOOLS

ILLUSTRATION	TOOL NUMBER	DESCRIPTION	REMARKS
 ST24082AA230	24082AA230	CARTRIDGE	Troubleshooting for electrical systems.
 ST22771AA030	22771AA030	SUBARU SELECT MONITOR KIT	Troubleshooting for electrical systems.

2. GENERAL PURPOSE TOOLS

TOOL NAME	REMARKS
Circuit tester	Used for measuring resistance, voltage and current.
Pressure gauge	Used for measuring oil pressure.
Oscilloscope	Used for measuring sensor.