

# GENERAL DESCRIPTION

## FRONT SUSPENSION

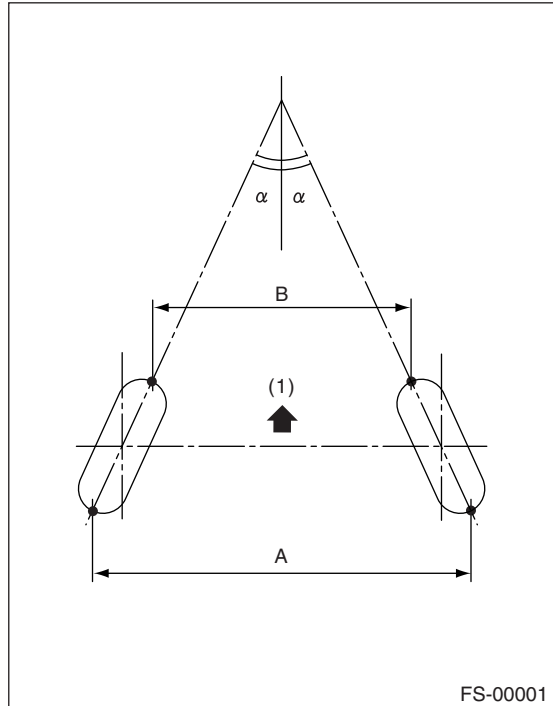
### 1. General Description

#### A: SPECIFICATIONS

Model		Non-turbo	Turbo
Front	Camber (tolerance: $\pm 0^{\circ}45'$ )	$-0^{\circ}25'$	
	Caster (Reference)	$3^{\circ}03'$	
	Toe-in	$0 \pm 3$ mm ( $0 \pm 0.12$ in) Each toe angle: $0^{\circ} \pm 0^{\circ}07'30''$	
	Kingpin angle (Reference)	$13^{\circ}12'$	
	Wheel arch height (tolerance: $+12/-24$ mm ( $+0.47/-0.94$ in))	$437$ mm ( $17.20$ in)	
	Diameter of stabilizer	$21$ mm ( $0.83$ in)	
Rear	Camber (tolerance: $\pm 0^{\circ}45'$ )	$-0^{\circ}50'$	$-0^{\circ}55'$
	Toe-in	$2 \pm 3$ mm ( $0.079 \pm 0.118$ in) Each toe angle: $0^{\circ}05' \pm 0^{\circ}07'30''$	
	Thrust angle	$0^{\circ} \pm 30'$	
	Wheel arch height (tolerance: $+12/-24$ mm ( $+0.47/-0.94$ in))	$440$ mm ( $17.32$ in)	$435$ mm ( $17.13$ in)
	Diameter of stabilizer	$17$ mm ( $0.67$ in)	

**NOTE:**

- Front and rear toe-ins and front camber can be adjusted. If toe-in or camber tolerance exceeds specifications, adjust toe-in and camber to the middle value of specification.
- The other items indicated in the specification table cannot be adjusted. If the other items exceeds specifications, check suspension parts and connections for deformities; replace with new ones as required.



(1) Front

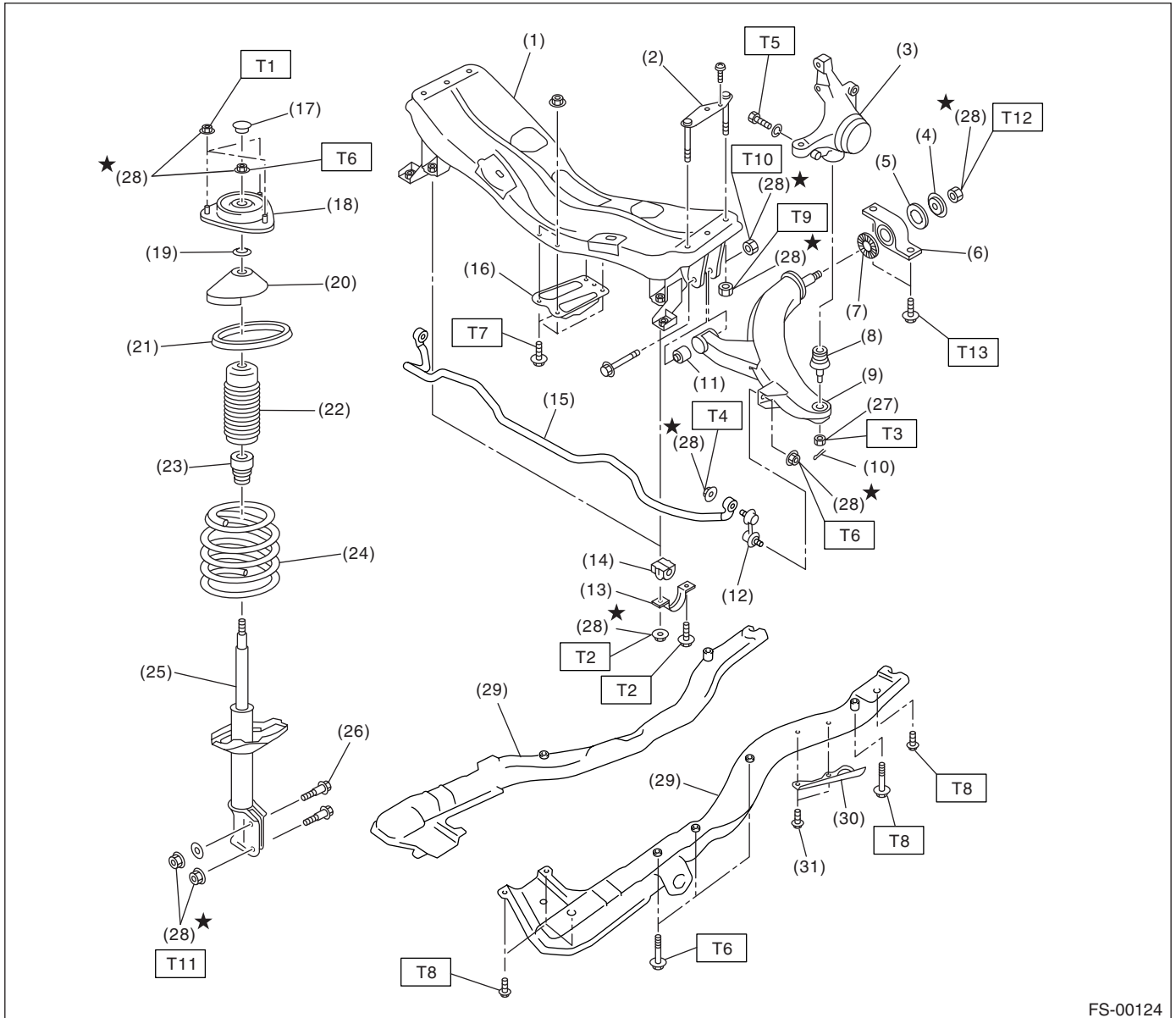
A – B = Positive: Toe-in, Negative: Toe-out

$\alpha$  = Each toe angle

# GENERAL DESCRIPTION

FRONT SUSPENSION

## B: COMPONENT



- |                            |                        |
|----------------------------|------------------------|
| (1) Front crossmember      | (17) Dust seal         |
| (2) Bolt ASSY              | (18) Strut mount       |
| (3) Housing                | (19) Spacer            |
| (4) Washer                 | (20) Upper spring seat |
| (5) Stopper rubber (Rear)  | (21) Rubber seat       |
| (6) Rear bushing           | (22) Dust cover        |
| (7) Stopper rubber (Front) | (23) Helper            |
| (8) Ball joint             | (24) Coil spring       |
| (9) Transverse link        | (25) Damper strut      |
| (10) Cotter pin            | (26) Adjusting bolt    |
| (11) Front bushing         | (27) Castle nut        |
| (12) Stabilizer link       | (28) Self-locking nut  |
| (13) Clamp                 | (29) Sub frame         |
| (14) Bushing               | (30) Cover             |
| (15) Stabilizer            | (31) Clip              |
| (16) Jack-up plate         |                        |

### **Tightening torque: N-m (kgf-m, ft-lb)**

**T1: 20 (2.0, 14.5)**

**T2: 25 (2.5, 18.1)**

**T3: 40 (4.1, 30) (Further tighten 60° or less)**

**T4: 45 (4.6, 33)**

**T5: 50 (5.1, 37)**

**T6: 55 (5.6, 41)**

**T7: 70 (7.1, 52)**

**T8: 71 (7.2, 52)**

**T9: 100 (10.2, 74)**

**T10: 125 (12.7, 92.3)**

**T11: 175 (17.8, 129)**

**T12: 190 (19.4, 140)**

**T13: 250 (25.5, 184)**

## GENERAL DESCRIPTION

### FRONT SUSPENSION

---

#### **C: CAUTION**

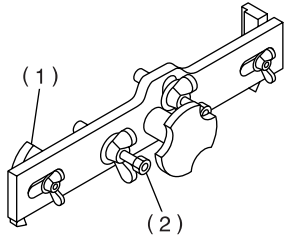
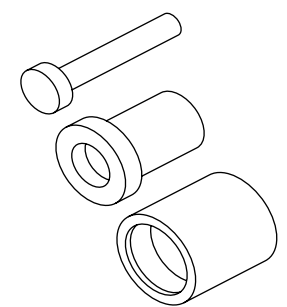
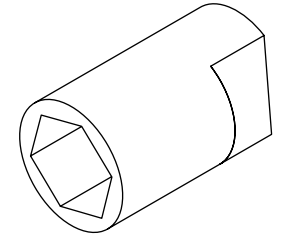
- Wear working clothing, including a cap, protective goggles, and protective shoes during operation.
- Before removal, installation or disassembly, be sure to clarify the failure. Avoid unnecessary removal, installation, disassembly, and replacement.
- Use SUBARU genuine grease etc. or the equivalent. Do not mix grease etc. with that of another grade or from other manufacturers.
- Before securing a part on a vise, place cushioning material such as wood blocks, aluminum plate, or shop cloth between the part and the vise.
- Be sure to tighten fasteners including bolts and nuts to the specified torque.
- Place shop jacks or safety stands at the specified points.

# GENERAL DESCRIPTION

FRONT SUSPENSION

## D: PREPARATION TOOL

### 1. SPECIAL TOOLS

ILLUSTRATION	TOOL NUMBER	DESCRIPTION	REMARKS
 <p style="text-align: center;">ST-927380001</p>	927380001	ADAPTER	Used as an adapter for camber & caster gauge when measuring camber and caster. (1) 28199AC000 PLATE (2) 28199AC010 BOLT
 <p style="text-align: center;">ST-927680000</p>	927680000	INSTALLER & REMOVER SET	Used for replacing transverse link bushing.
 <p style="text-align: center;">ST-927760000</p>	927760000	STRUT MOUNT SOCKET	Used for disassembling and assembling strut and shock mount.

### 2. GENERAL PURPOSE TOOLS

TOOL NAME	REMARKS
Alignment gauge	Used for wheel alignment measurement.
Turning radius gauge	Used for wheel alignment measurement.
Toe-in gauge	Used for toe-in measurement.
Dial gauge	Used for damper strut measurement.
Coil spring compressor	Used for strut disassembly / assembly.