

GENERAL DESCRIPTION

CONTROL SYSTEMS

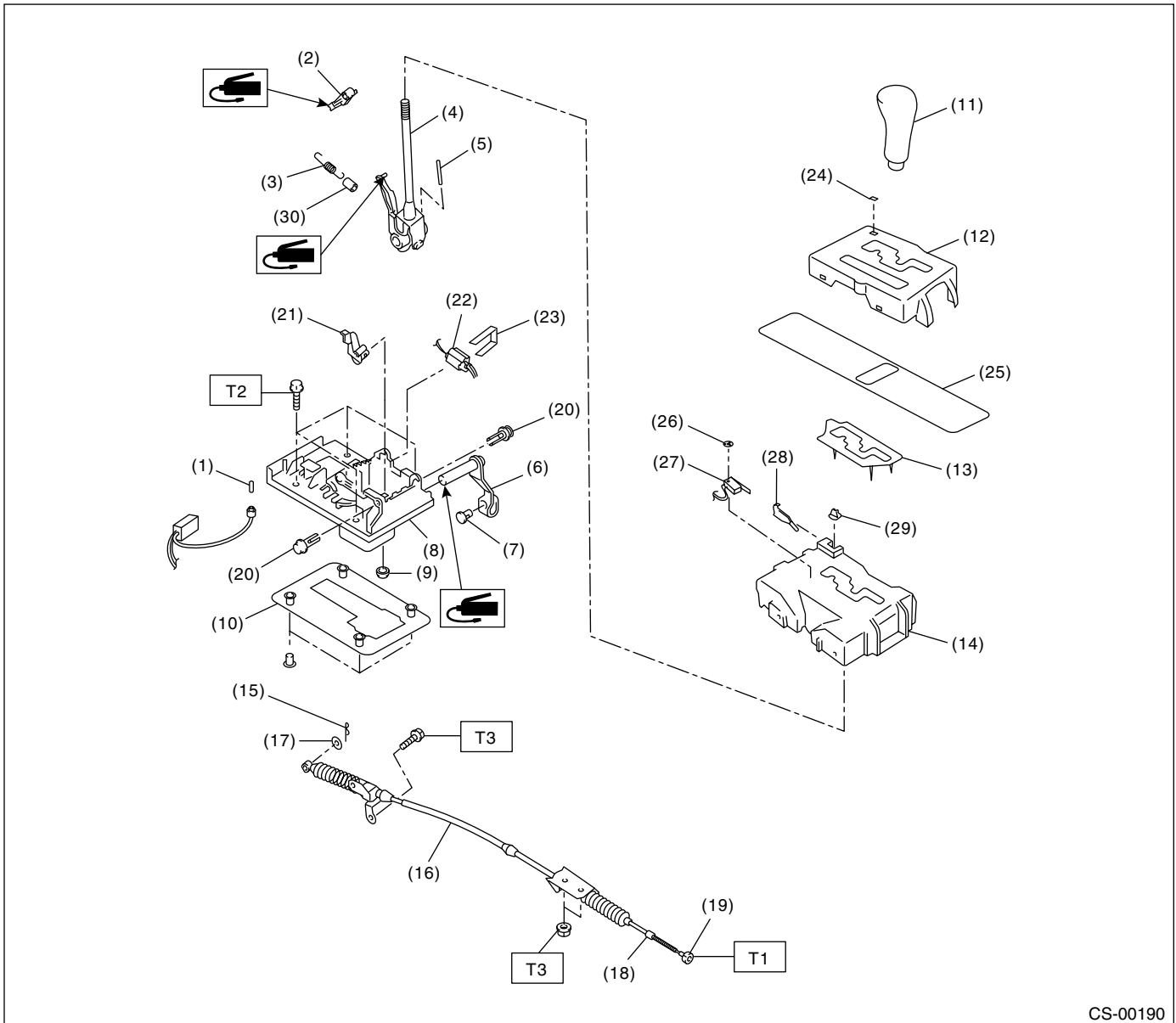
1. General Description

A: SPECIFICATIONS

Item	Specification
Swing torque of rod against lever N (kgf, lb)	3.7 (0.38, 0.84) or less

B: COMPONENT

1. AT SELECT LEVER



CS-00190

- | | | |
|-----------------------|--------------------------|---------------------|
| (1) Indicator bulb | (13) Cushion plate | (25) Blind |
| (2) Detent arm | (14) Guide plate | (26) Clamp |
| (3) Detent spring | (15) Snap pin | (27) Parking switch |
| (4) Select lever ASSY | (16) Select cable | (28) Spring |
| (5) Spring pin | (17) Washer | (29) Button |
| (6) Arm | (18) Nut B | (30) Tube |
| (7) Bush | (19) Nut A | |
| (8) Plate | (20) Clamp | |
| (9) Grommet | (21) Lock plate | |
| (10) Packing | (22) Shift lock solenoid | |
| (11) Grip | (23) Clamp | |
| (12) Indicator cover | (24) Cover | |

Tightening torque: N·m (kgf·m, ft·lb)

T1: 7.5 (0.76, 5.5)

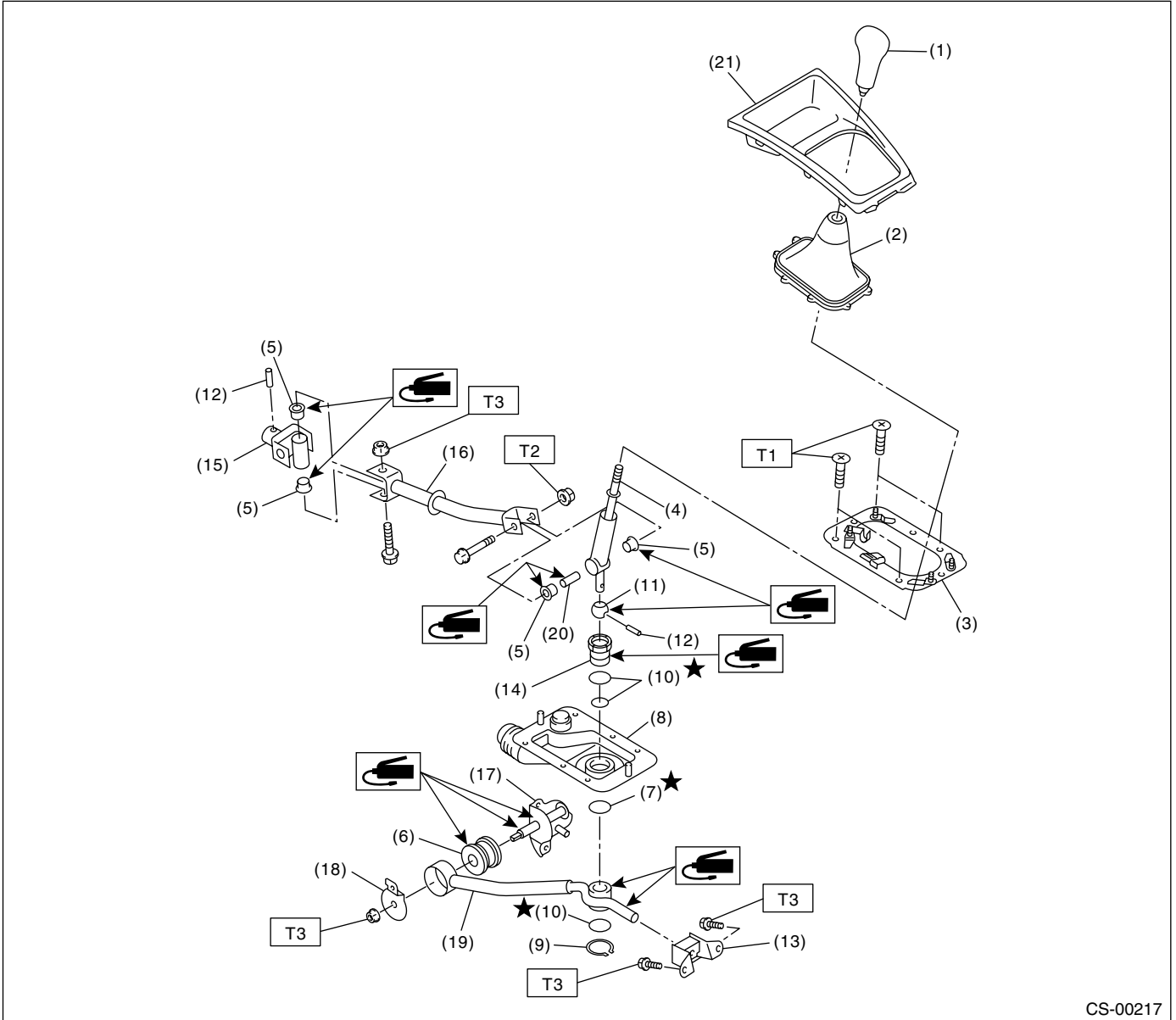
T2: 13 (1.3, 9.4)

T3: 18 (1.8, 13.0)

GENERAL DESCRIPTION

CONTROL SYSTEMS

2. 5MT GEAR SHIFT LEVER



CS-00217

- | | | |
|---------------------|---------------------|------------------|
| (1) Gear shift knob | (10) O-ring | (19) Stay |
| (2) Console boot | (11) Bushing A | (20) Spacer |
| (3) Plate ASSY | (12) Spring pin | (21) Front cover |
| (4) Lever | (13) Cushion rubber | |
| (5) Bushing | (14) Bushing B | |
| (6) Bushing | (15) Joint | |
| (7) Lock wire | (16) Rod | |
| (8) Boot | (17) Bracket | |
| (9) Snap ring | (18) Washer | |

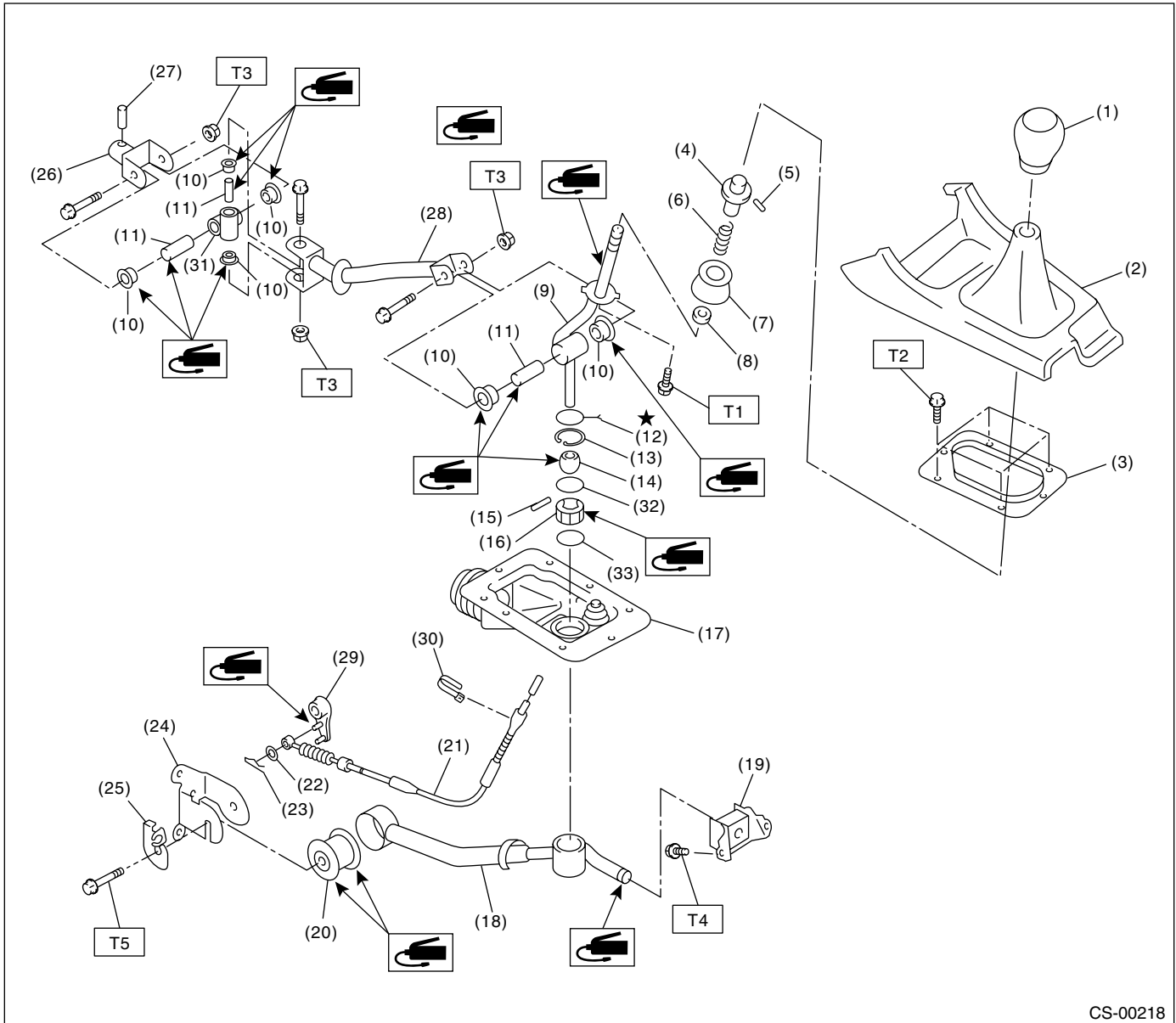
Tightening torque: N·m (kgf·m, ft·lb)

T1: 7.5 (0.76, 5.5)

T2: 12 (1.2, 8.7)

T3: 18 (1.8, 13.0)

3. 6MT GEAR SHIFT LEVER



CS-00218

- | | | |
|-----------------------|--------------------------|--------------------------|
| (1) Gear shift knob | (15) Spring pin | (29) Reverse check lever |
| (2) Console box front | (16) Bush | (30) Band clip |
| (3) Plate | (17) Boot | (31) Boss |
| (4) Slider | (18) Stay | (32) O-ring |
| (5) Spring pin | (19) Cushion rubber | (33) O-ring |
| (6) Spring | (20) Bush | |
| (7) Holder | (21) Reverse check cable | |
| (8) Seat cushion | (22) Washer | |
| (9) Lever | (23) Snap pin | |
| (10) Bush | (24) Bracket | |
| (11) Spacer | (25) Cable plate | |
| (12) Lock wire | (26) Joint | |
| (13) Snap ring | (27) Spring pin | |
| (14) Bush | (28) Rod | |

Tightening torque: N-m (kgf-m, ft-lb)

T1: 1.3 (0.13, 0.96)

T2: 7.5 (0.76, 5.5)

T3: 11.8 (1.2, 8.7)

T4: 18 (1.8, 13.0)

T5: 32 (3.3, 23.6)

C: CAUTION

- Wear working clothing, including a cap, protective goggles, and protective shoes during operation.
- Remove contamination including dirt and corrosion before removal, installation or disassembly.
- Keep the disassembled parts in order and protect them from dust or dirt.
- Before removal, installation or disassembly, be sure to clarify the failure. Avoid unnecessary removal, installation, disassembly, and replacement.
- Use SUBARU genuine grease etc. or the equivalent. Do not mix grease etc. with that of another grade or from other manufacturers.
- Be sure to tighten fasteners including bolts and nuts to the specified torque.
- Place shop jacks or safety stands at the specified points.
- Apply grease onto sliding or revolution surfaces before installation.
- Before installing O-rings or snap rings, apply sufficient amount of grease to avoid damage and deformation.
- Before securing a part on a vise, place cushioning material such as wood blocks, aluminum plate, or shop cloth between the part and the vise.
- Before disconnecting electrical connectors, be sure to disconnect the ground cable from battery.