

# READ DIAGNOSTIC TROUBLE CODE (DTC)

MANUAL TRANSMISSION AND DIFFERENTIAL (DIAGNOSTICS)

---

## 6. Read Diagnostic Trouble Code (DTC)

### A: OPERATION

#### 1. STORED DIAGNOSTIC TROUBLE CODE (DTC)

- 1) Securely apply the parking brake.
- 2) Turn the ignition switch to ON.
- 3) Set the driver's control dial to differential lock or differential free.
- 4) Hold the accelerator pedal depressed fully.

**NOTE:**

Hold the accelerator pedal depressed fully until reading of DTC is completed.

- 5) Set the driver's control dial to differential lock and differential free for ten times each.

**NOTE:**

- Repeat the step from the beginning when DTC is not displayed or diagnostic indicator light does not blink.
- Refer to "HOW TO READ DIAGNOSTIC TROUBLE CODE (DTC)" for reading DTC. <Ref. to 6MT-13, HOW TO READ DIAGNOSTIC TROUBLE CODE (DTC), OPERATION, Read Diagnostic Trouble Code (DTC).>

#### 2. SELF-DIAGNOSIS DIAGNOSTIC TROUBLE CODE (DTC)

**NOTE:**

Perform the following step 4) to 8) within 30 sec.

- 1) Securely apply the parking brake.
- 2) Set the center differential control dial to differential free.
- 3) Start the engine.
- 4) Set the center differential control dial to differential lock.
- 5) Release the parking brake.
- 6) Set the center differential control dial to differential free.
- 7) Securely apply the parking brake.
- 8) Repeat the step 4) to 7) for twice.

**NOTE:**

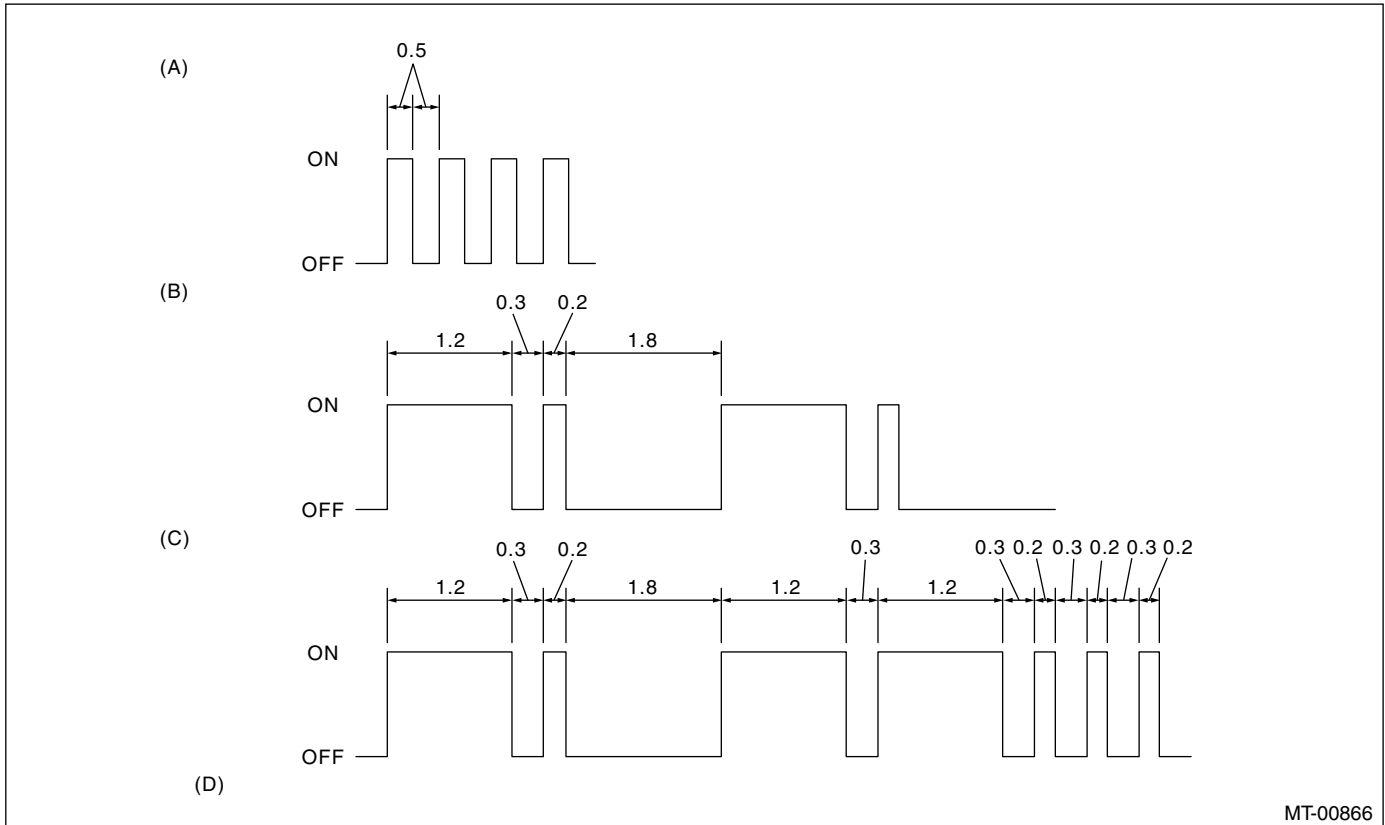
- ABS wheel speed sensor DTC is displayed. Do not judge it as a problem. Perform the inspection mode.
- Repeat the step from the beginning when DTC is not displayed or diagnostic indicator light does not blink.
- Refer to "HOW TO READ DIAGNOSTIC TROUBLE CODE (DTC)" for reading DTC. <Ref. to 6MT-13, HOW TO READ DIAGNOSTIC TROUBLE CODE (DTC), OPERATION, Read Diagnostic Trouble Code (DTC).>

# READ DIAGNOSTIC TROUBLE CODE (DTC)

MANUAL TRANSMISSION AND DIFFERENTIAL (DIAGNOSTICS)

## 3. HOW TO READ DIAGNOSTIC TROUBLE CODE (DTC)

DTC for faulty part is indicated by blinking of driver's control center differential indicator. Long blink (1.2 sec.) means ten's place, short blink (0.2 sec.) means one's place.



(A) Normal code  
(B) DTC 11

(C) DTC 11 and 23

(D) Unit: Seconds

### NOTE:

- The codes which are memorized in control module as previous DTC by occurring the trouble in the past, and the codes which are appeared to inform the trouble to driver in normal driving condition; are only "11", "12", "13", "14", "21", "22" and "23".
- For details of DTC, refer to "List of Diagnostic Trouble Code (DTC)". <Ref. to 6MT-17, List of Diagnostic Trouble Code (DTC).>