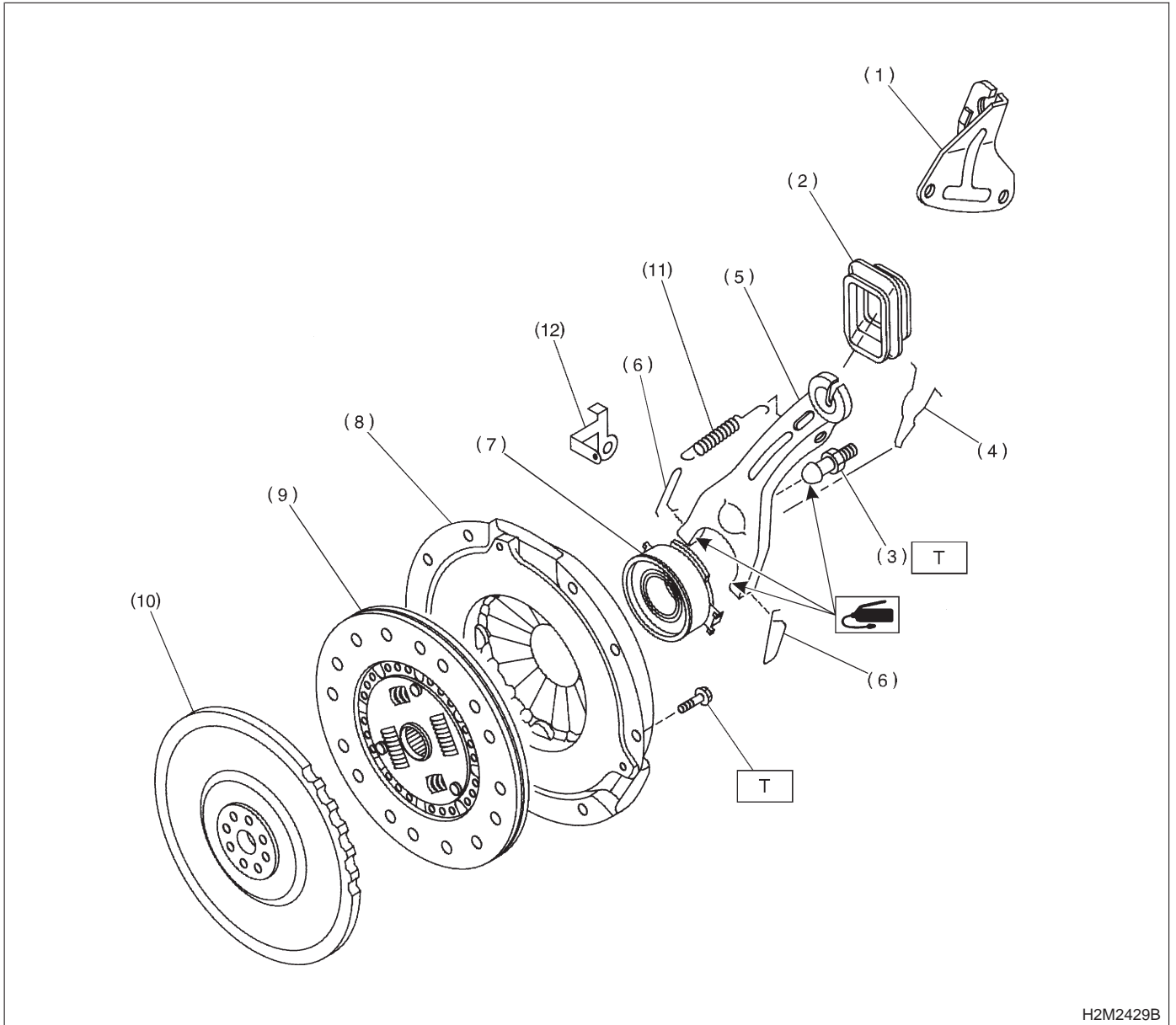


1. Clutch System

A: MECHANICAL APPLICATION TYPE

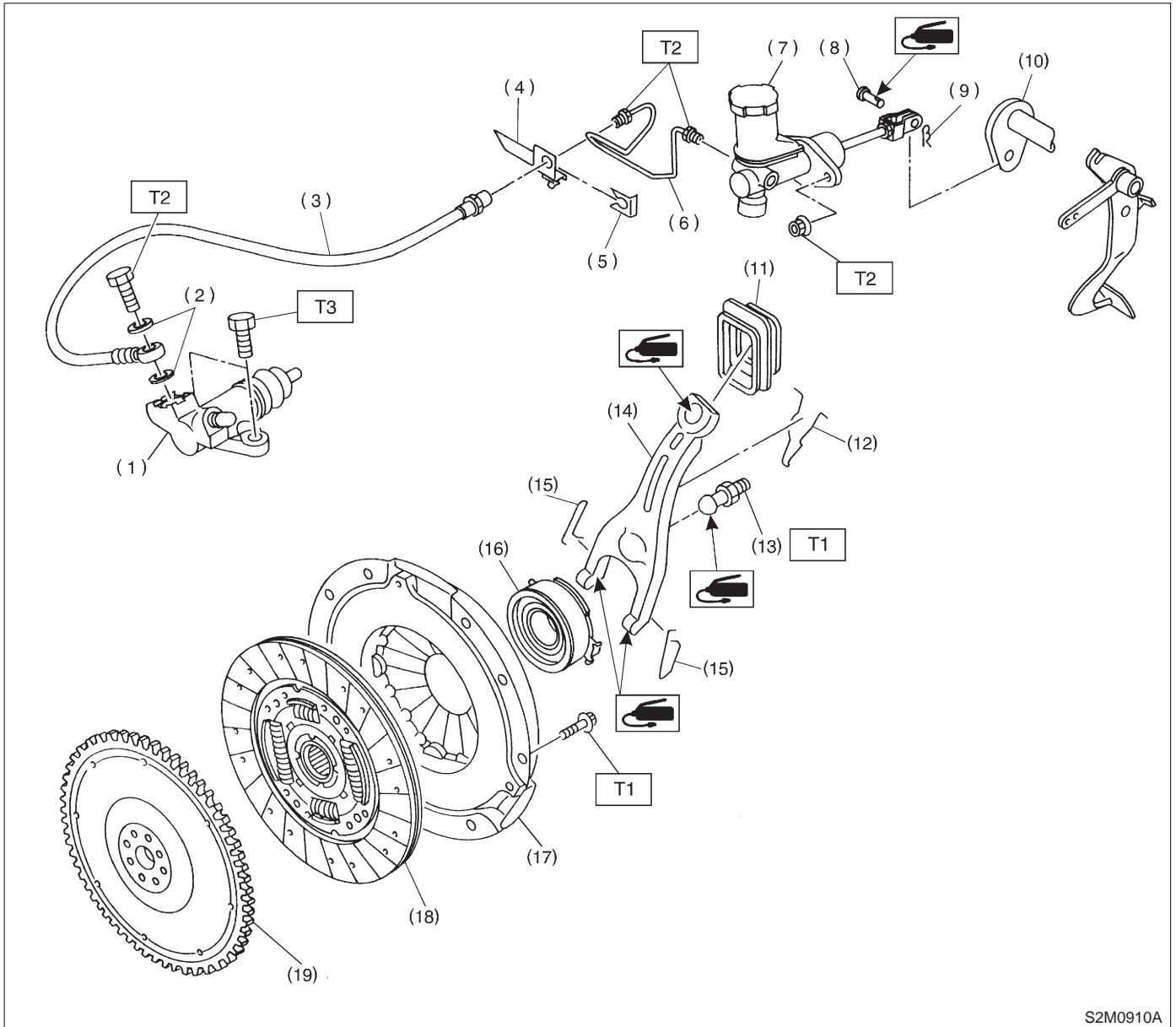


H2M2429B

- | | | |
|----------------------------------|----------------------------|-----------------------------------|
| (1) Clutch cable bracket | (6) Clip | (11) Return spring |
| (2) Clutch release lever sealing | (7) Clutch release bearing | (12) Clutch return spring bracket |
| (3) Pivot | (8) Clutch cover | |
| (4) Retainer spring | (9) Clutch disc | |
| (5) Clutch release lever | (10) Flywheel | |

Tightening torque: N-m (kg-m, ft-lb)
T: 15.7±1.5 (1.6±0.15, 11.6±1.1)

B: HYDRAULIC APPLICATION TYPE



S2M0910A

- (1) Operating cylinder
- (2) Washer
- (3) Clutch hose
- (4) Bracket
- (5) Clip
- (6) Pipe
- (7) Master cylinder ASSY
- (8) Clevis pin
- (9) Snap pin

- (10) Lever
- (11) Clutch release lever sealing
- (12) Retainer spring
- (13) Pivot
- (14) Release lever
- (15) Clip
- (16) Release bearing
- (17) Clutch cover
- (18) Clutch disc

- (19) Flywheel

Tightening torque: N-m (kg-m, ft-lb)

T1: 15.7±1.5 (1.6±0.15, 11.6±1.1)

T2: 18±3 (1.8±0.3, 13.0±2.2)

T3: 37±3 (3.8±0.3, 27.5±2.2)