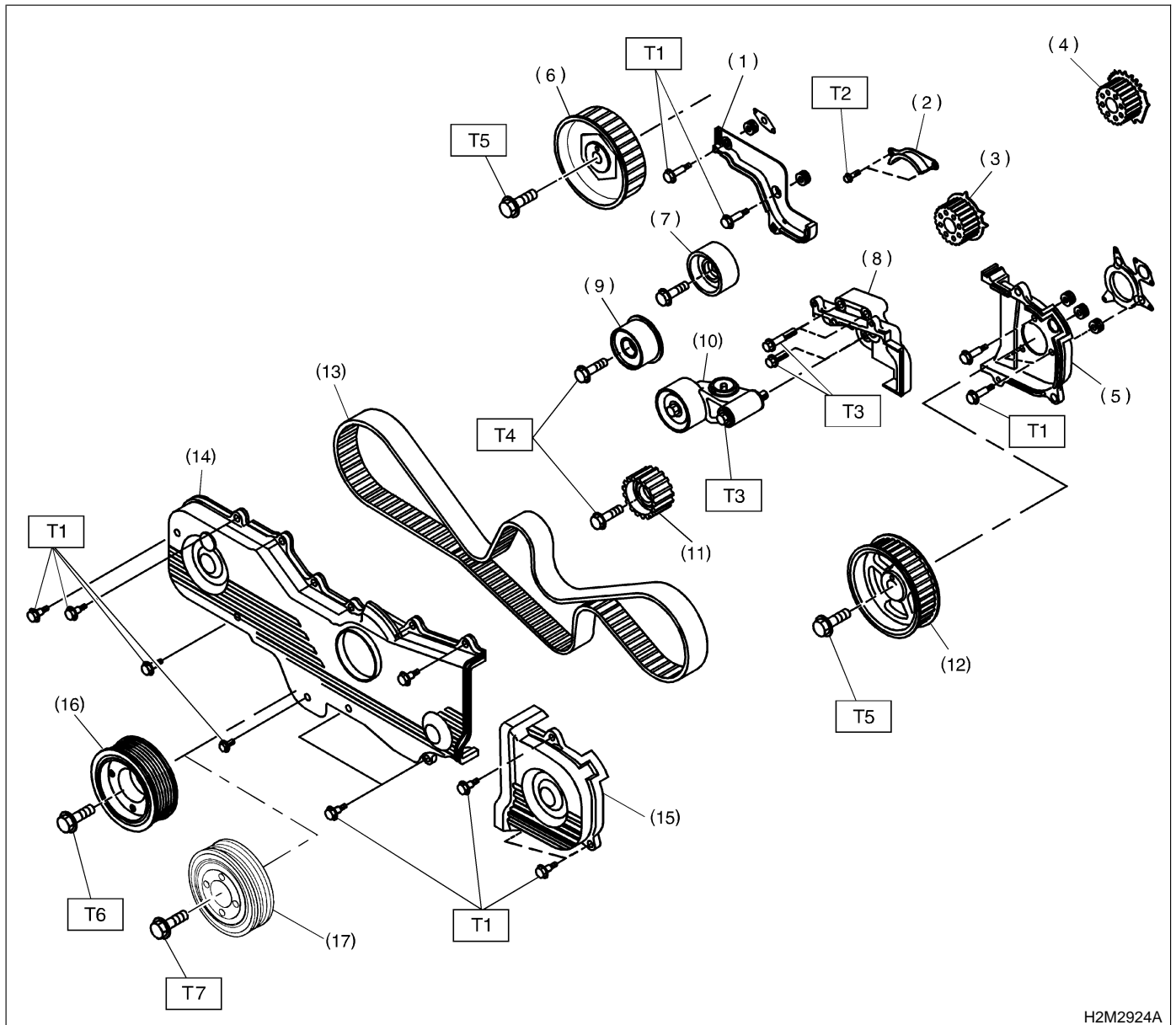


1. Timing Belt



H2M2924A

- |  |   |
|--|---|
| (1) Belt cover No. 2 (RH)  | (9) Belt idler (No. 2)                    |
| (2) Timing belt guide (MT vehicles only)                           | (10) Automatic belt tension adjuster ASSY |
| (3) Crankshaft sprocket (Except 2200 cc California spec. vehicles) | (11) Belt idler No. 2                     |
| (4) Crankshaft sprocket (2200 cc California spec. vehicles)        | (12) Camshaft sprocket No. 2              |
| (5) Belt cover No. 2 (LH)  | (13) Timing belt                          |
| (6) Camshaft sprocket No. 1  | (14) Front belt cover                     |
| (7) Belt idler (No. 1)   | (15) Belt cover (LH)                      |
| (8) Tensioner bracket  | (16) Crankshaft pulley (2200 cc model)    |
|  | (17) Crankshaft pulley (2500 cc model)    |

**Tightening torque: N-m (kg-m, ft-lb)**

- T1: 5±1 (0.5±0.1, 3.6±0.7)**  
**T2: 9.8±1.0 (1.0±0.1, 7.2±0.7)**  
**T3: 25±3 (2.5±0.3, 18.1±2.2)**  
**T4: 39±4 (4.0±0.4, 28.9±2.9)**  
**T5: 78±5 (8.0±0.5, 57.9±3.6)**  
**T6: 127±5 (13.0±0.5, 94±3.6)**  
**T7: 177±5 (18.0±0.5, 130.2±3.6)**