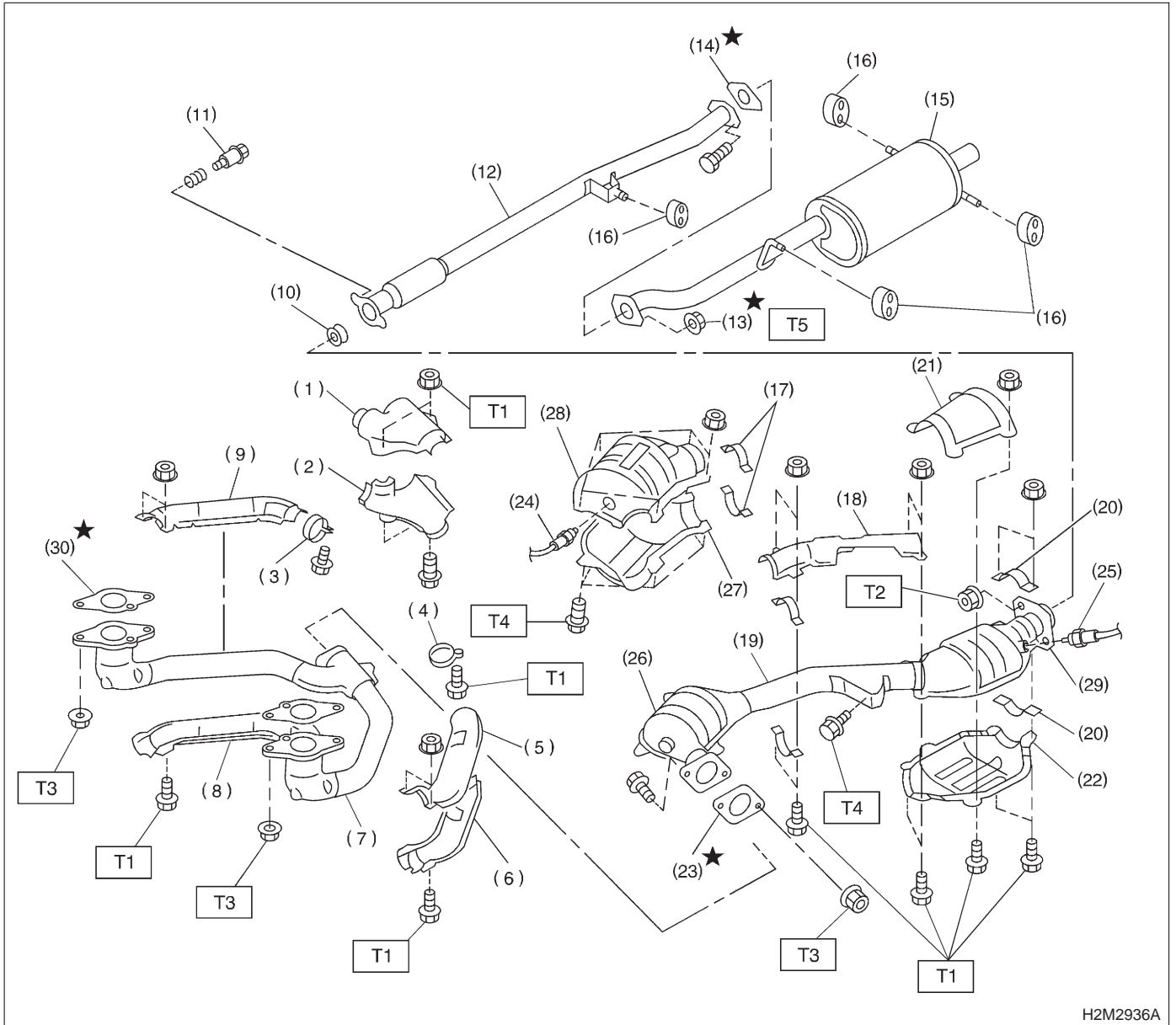


# 1. Exhaust System

## A: 2200 cc MODEL



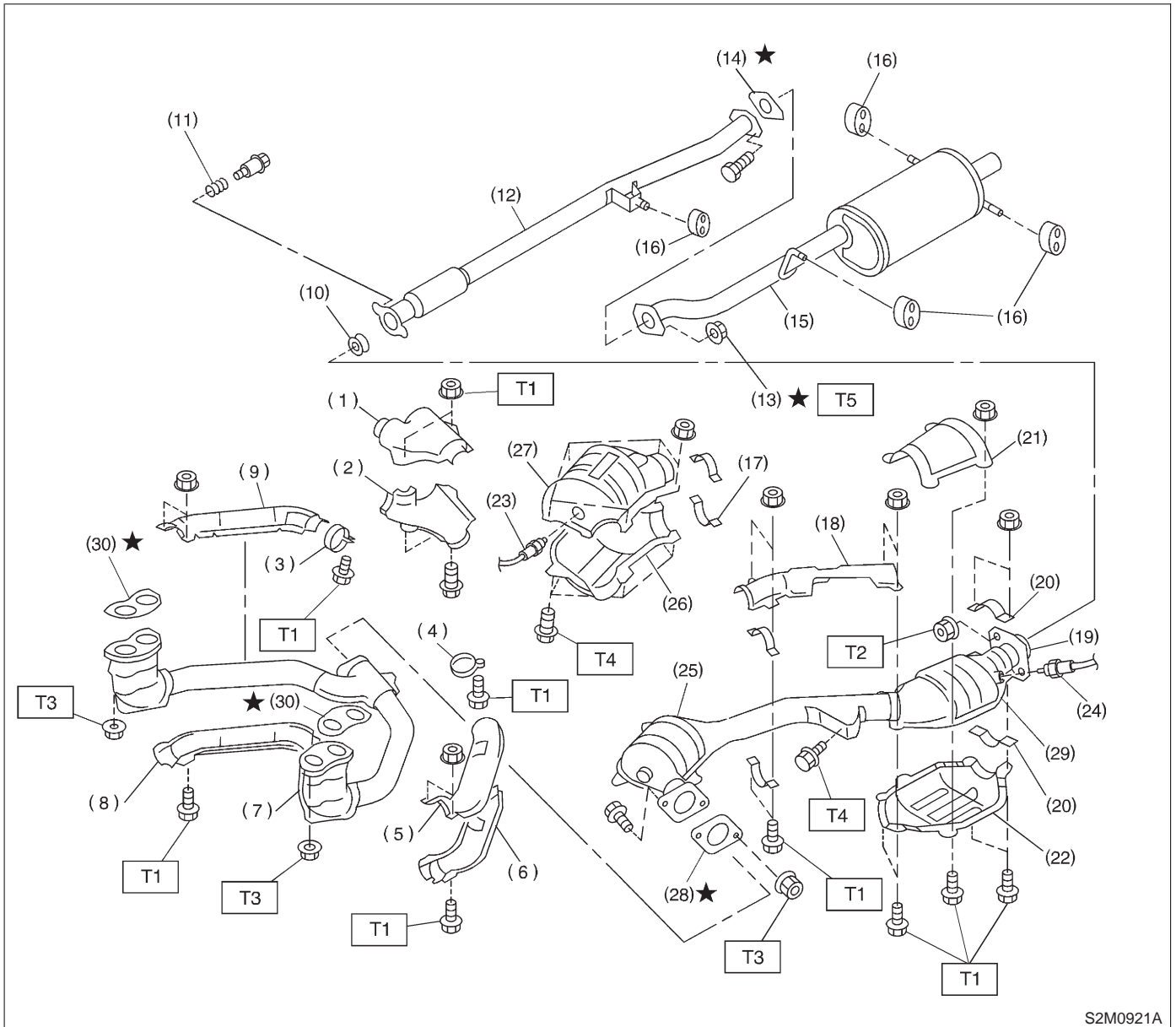
H2M2936A

# COMPONENT PARTS

[C1A0] 2-9  
1. Exhaust System

- 
- |   |  |   |
|---|--|---|
| (1) Upper front exhaust pipe cover<br>CTR | (12) Rear exhaust pipe                       | (24) Front oxygen (A/F) sensor (California spec. vehicle) |
| (2) Lower front exhaust pipe cover<br>CTR | (13) Self-locking nut                        | Front oxygen sensor (Except California spec. vehicle)     |
| (3) Band RH                               | (14) Gasket                                  | (25) Rear oxygen sensor                                   |
| (4) Band LH                               | (15) Muffler                                 | (26) Front catalytic converter                            |
| (5) Upper front exhaust pipe cover<br>LH  | (16) Cushion rubber                          | (27) Lower front catalytic converter<br>cover             |
| (6) Lower front exhaust pipe cover<br>LH  | (17) Clamp                                   | (28) Upper front catalytic converter<br>cover             |
| (7) Front exhaust pipe                    | (18) Upper center exhaust pipe cover         | (29) Rear catalytic converter                             |
| (8) Lower front exhaust pipe cover<br>RH  | (19) Center exhaust pipe                     | (39) Gasket   |
| (9) Upper front exhaust pipe cover<br>RH  | (20) Clamp B                                 |   |
| (10) Gasket                               | (21) Upper rear catalytic converter<br>cover |   |
| (11) Spring                               | (22) Lower rear catalytic converter<br>cover |   |
|   | (23) Rear oxygen sensor                      |   |
- 
- Tightening torque: N-m (kg-m, ft-lb)**
- T1: 13±3 (1.3±0.3, 9.4±2.2)**
- T2: 18±5 (1.8±0.5, 13.0±3.6)**
- T3: 30±5 (3.1±0.5, 22.4±3.6)**
- T4: 35±5 (3.6±0.5, 26.0±3.6)**
- T5: 48±5 (4.9±0.5, 35.4±3.6)**
-

B: 2500 cc MODEL



S2M0921A

- |  |   |  |
|--|---|--|
| (1) Upper front exhaust pipe cover CTR | (11) Spring                               | (25) Front catalytic converter             |
| (2) Lower front exhaust pipe cover CTR | (12) Rear exhaust pipe                    | (26) Lower front catalytic converter cover |
| (3) Band RH                            | (13) Self-locking nut                     | (27) Upper front catalytic converter cover |
| (4) Band LH                            | (14) Gasket                               | (28) Gasket                                |
| (5) Upper front exhaust pipe cover LH  | (15) Muffler                              | (29) Rear catalytic converter              |
| (6) Lower front exhaust pipe cover LH  | (16) Cushion rubber                       | (30) Gasket                                |
| (7) Front exhaust pipe                 | (17) Clamp                                |  |
| (8) Lower front exhaust pipe cover RH  | (18) Upper center exhaust pipe cover      |  |
| (9) Upper front exhaust pipe cover RH  | (19) Center exhaust pipe                  |  |
| (10) Gasket                            | (20) Clamp B                              |  |
|  | (21) Upper rear catalytic converter cover |  |
|  | (22) Lower rear catalytic converter cover |  |
|  | (23) Front oxygen sensor                  |  |
|  | (24) Rear oxygen sensor                   |  |

**Tightening torque: N-m (kg-m, ft-lb)**

**T1: 13±3 (1.3±0.3, 9.4±2.2)**

**T2: 18±5 (1.8±0.5, 13.0±3.6)**

**T3: 30±5 (3.1±0.5, 22.4±3.6)**

**T4: 35±5 (3.6±0.5, 26.0±3.6)**

**T5: 48±5 (4.9±0.5, 35.4±3.6)**