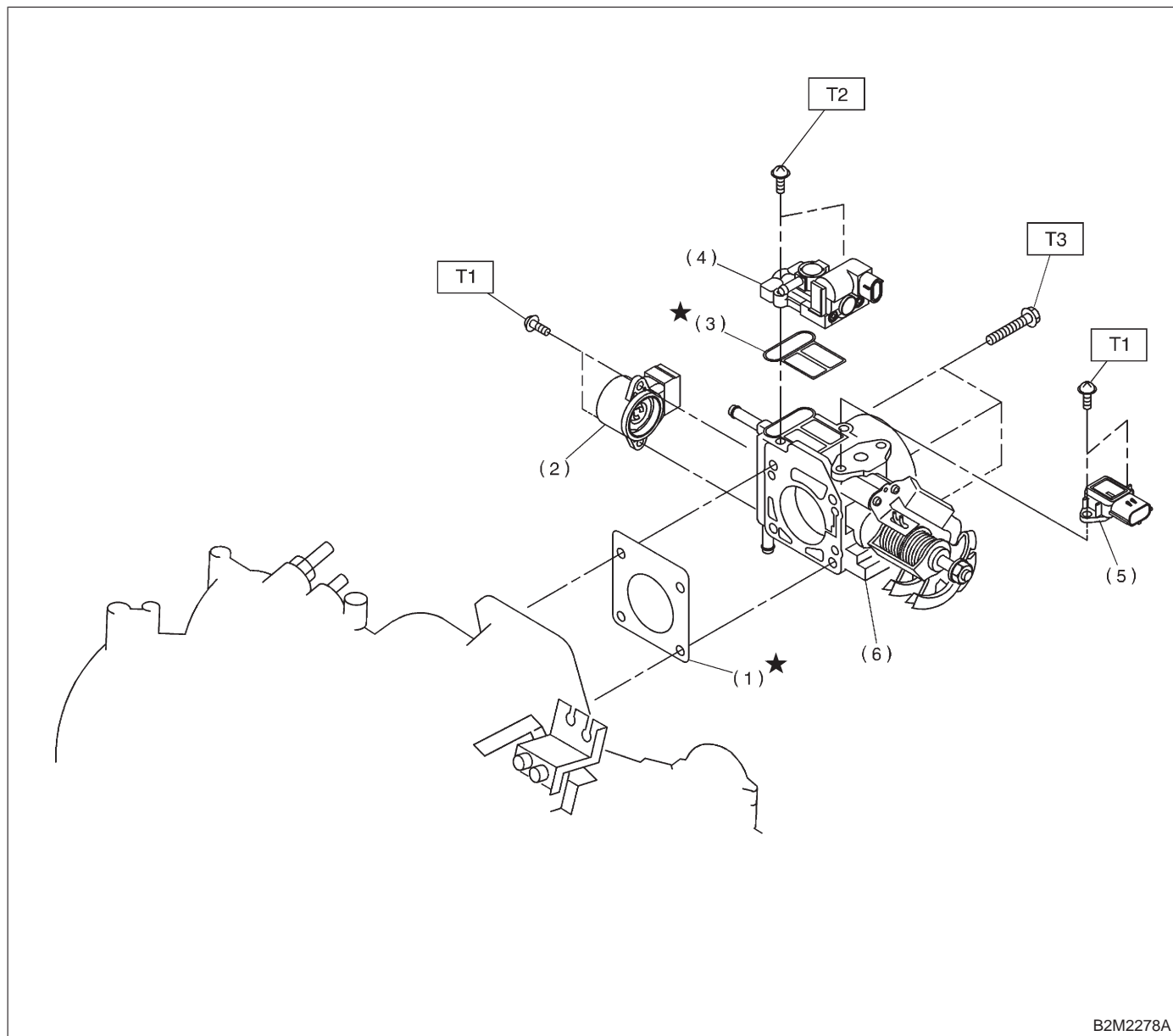


2. Air Intake System

A: 2200 cc CALIFORNIA SPEC. VEHICLES



- | | |
|-------------------------------------|-------------------------------------|
| (1) Gasket | (5) Intake manifold pressure sensor |
| (2) Throttle position sensor | (6) Throttle body |
| (3) Gasket | |
| (4) Idle air control solenoid valve | |

Tightening torque: N·m (kg·m, ft·lb)

T1: 2.0±0.4 (0.20±0.04, 1.4±0.3)

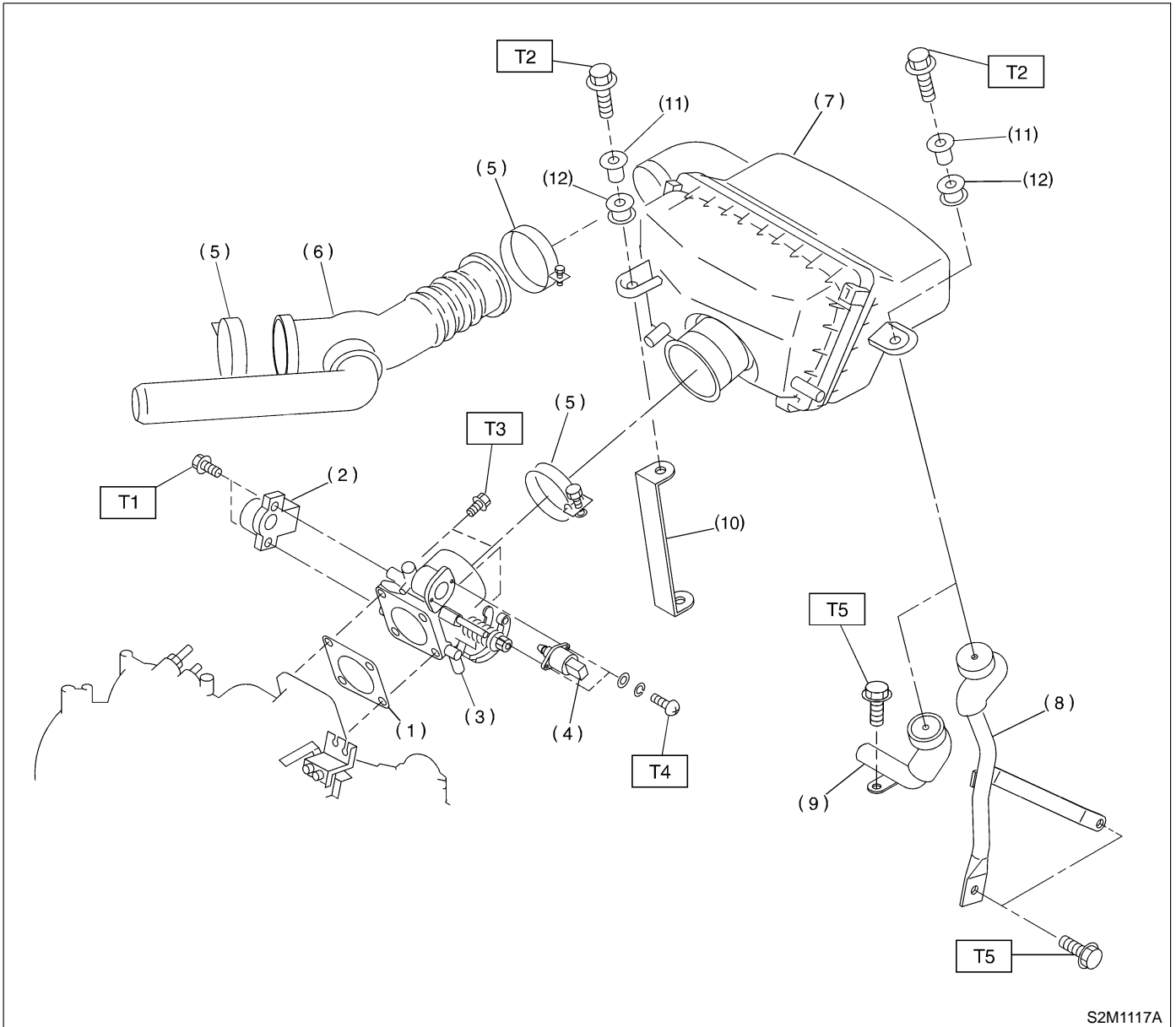
T2: 3.3±0.4 (0.34±0.045, 2.5±0.3)

T3: 22±2 (2.2±0.2, 15.9±1.4)

COMPONENT PARTS

[C2B0] 2-7
2. Air Intake System

B: EXCEPT 2200 cc CALIFORNIA SPEC. VEHICLES



S2M1117A

- | | |
|-------------------------------------|---------------------------|
| (1) Gasket | (8) Stay LH (MT vehicles) |
| (2) Throttle position sensor | (9) Stay LH (AT vehicles) |
| (3) Throttle body | (10) Stay RH |
| (4) Idle air control solenoid valve | (11) Spacer |
| (5) Clamp | (12) Bush |
| (6) Air intake duct | |
| (7) Air intake chamber | |

Tightening torque: N-m (kg-m, ft-lb)

T1: 2.0±0.4 (0.20±0.04, 1.4±0.3)

T2: 6.4±0.5 (0.65±0.05, 4.7±0.4)

T3: 22±2 (2.2±0.2, 15.9±1.4)

T4: 6.0±0.8 (0.61±0.08, 4.4±0.6)

T5: 16±5 (1.6±0.5, 11.6±3.6)