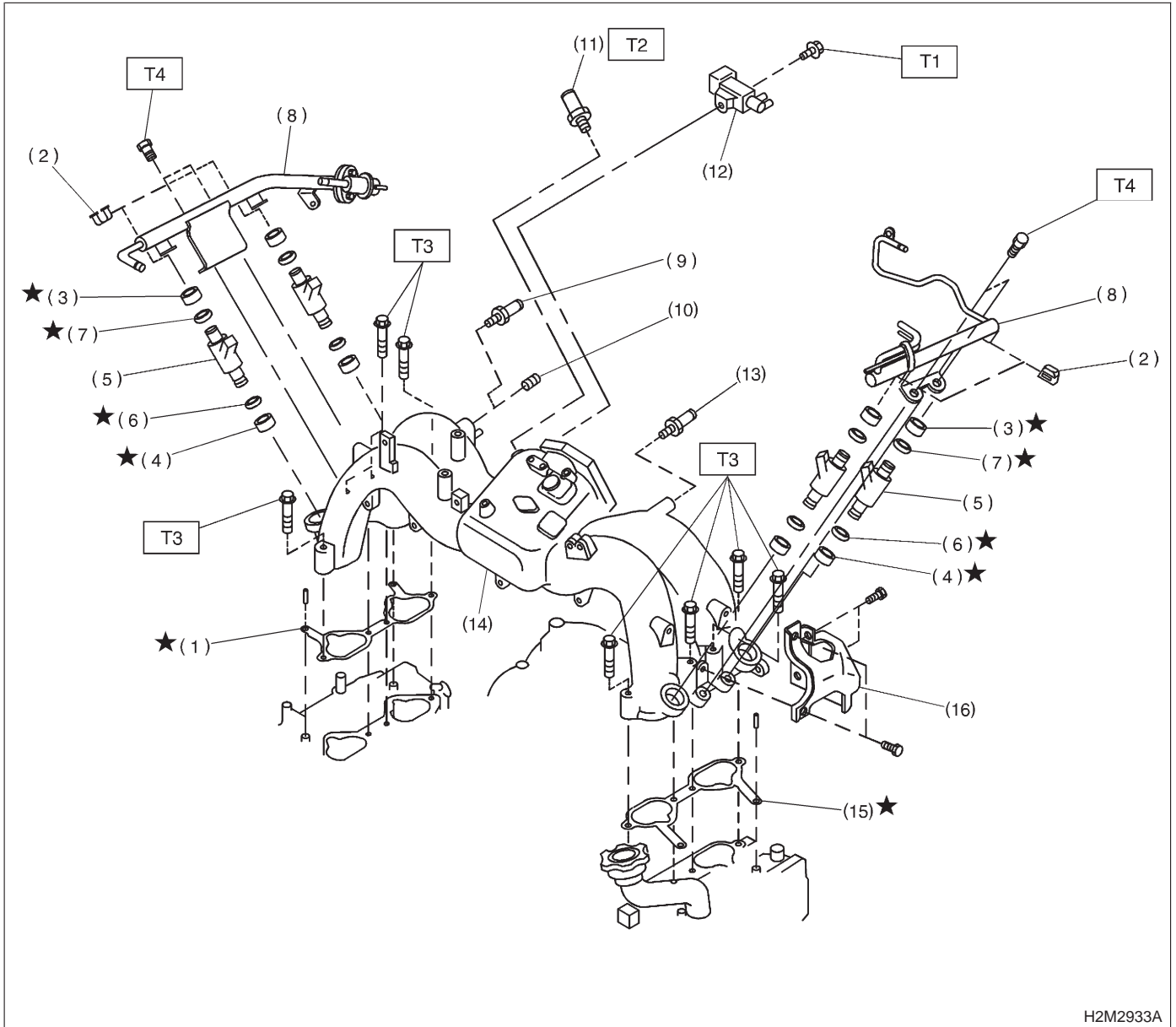


1. Intake Manifold

A: 2200 cc CALIFORNIA SPEC. VEHICLES



H2M2933A

- |                               |                                   |
|-------------------------------|-----------------------------------|
| (1) Intake manifold gasket RH | (9) Nipple (AT vehicles)          |
| (2) Fuel injector cap         | (10) Plug                         |
| (3) Insulator A               | (11) PCV valve                    |
| (4) Insulator B               | (12) Purge control solenoid valve |
| (5) Fuel injector             | (13) Nipple                       |
| (6) O-ring B                  | (14) Intake manifold              |
| (7) O-ring A                  | (15) Intake manifold gasket LH    |
| (8) Fuel pipe                 | (16) Fuel pipe protector          |

**Tightening torque: N-m (kg-m, ft-lb)**

**T1: 16±1.5 (1.6±0.15, 11.6±1.1)**

**T2: 23±3 (2.3±0.3, 16.6±2.2)**

**T3: 25±2 (2.5±0.2, 18.1±1.4)**

**T4: 3.4±0.5 (0.35±0.05, 2.5±0.4)**

## COMPONENT PARTS

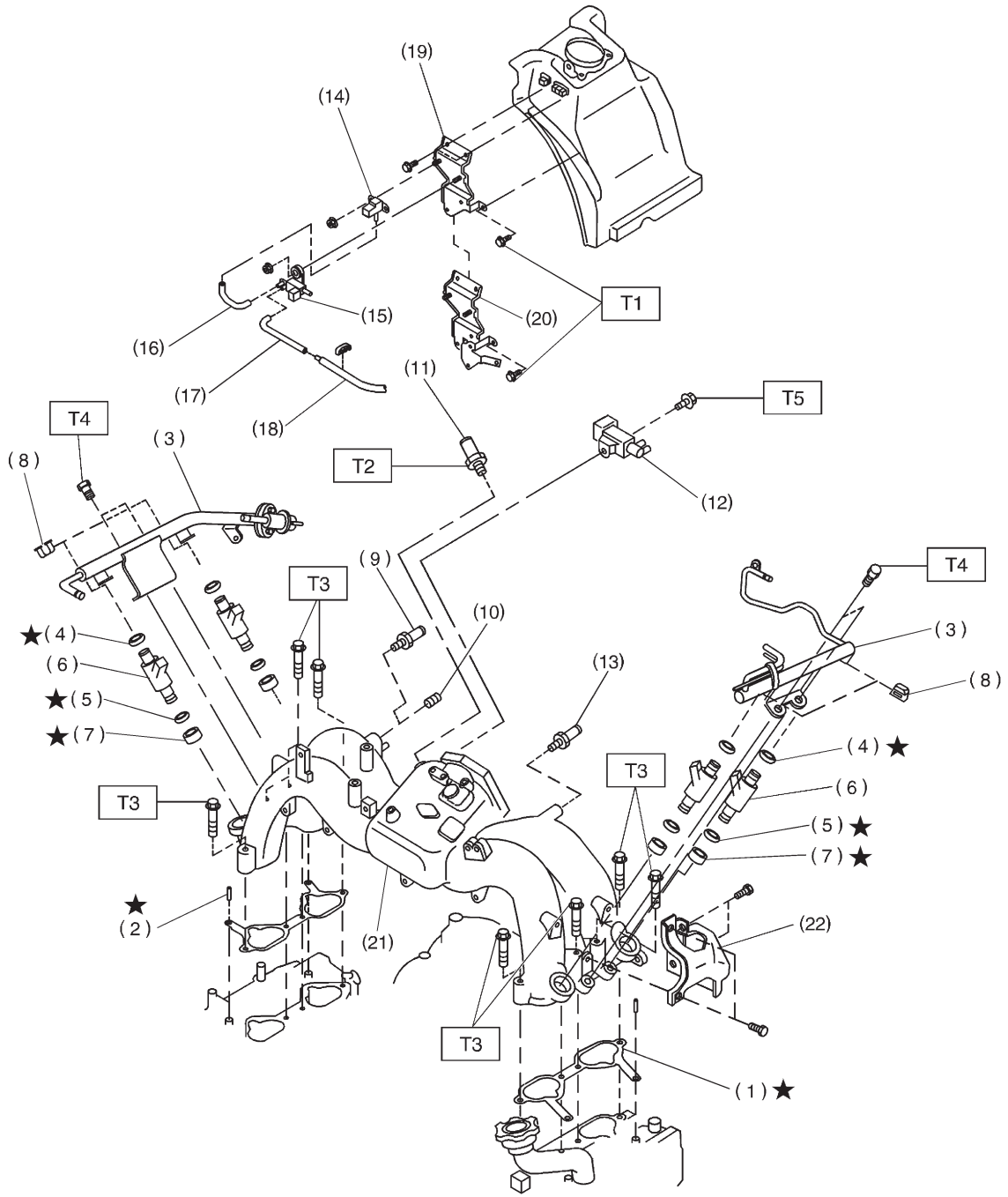
[C1A0] 2-7  
1. Intake Manifold

---

MEMO:

# COMPONENT PARTS

## B: EXCEPT 2200 cc CALIFORNIA SPEC. VEHICLES



## COMPONENT PARTS

[C1B0] 2-7  
1. Intake Manifold

---

(1) Intake manifold gasket LH	(12) Purge control solenoid valve	(20) Bracket (For Canada spec. vehicles)
(2) Intake manifold gasket RH	(13) Nipple	(21) Intake manifold
(3) Fuel injector pipe	(14) Pressure sensor	(22) Fuel pipe protector LH
(4) O-ring A	(15) Pressure sources switching solenoid valve	
(5) O-ring B	(16) Vacuum hose A	<b>Tightening torque: N-m (kg-m, ft-lb)</b>
(6) Fuel injector	(17) Vacuum hose B	<b>T1: 4.9±0.5 (0.5±0.05, 3.6±0.4)</b>
(7) Insulator	(18) Vacuum hose C	<b>T2: 23±3 (2.3±0.3, 16.6±2.2)</b>
(8) Fuel injector cap	(19) Bracket (Except Canada spec. vehicles)	<b>T3: 25±2 (2.5±0.2, 18.1±1.4)</b>
(9) Nipple (AT vehicles)		<b>T4: 3.4±0.5 (0.35±0.05, 2.5±0.4)</b>
(10) Plug		<b>T5: 15.7±1.5 (1.6±0.15, 11.6±1.1)</b>
(11) PCV valve		

---