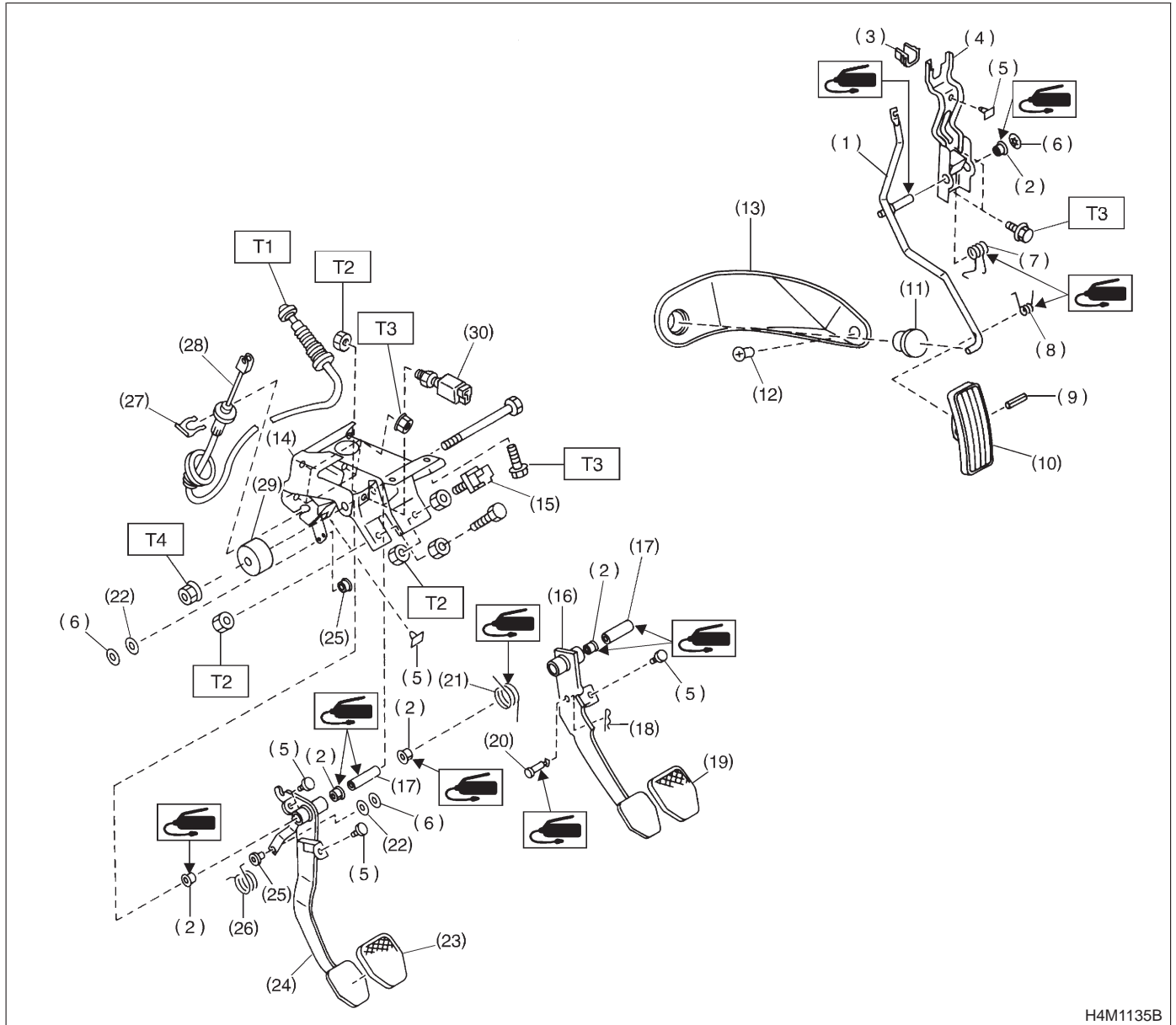


1. Pedal

A: MT MODEL

1. 2200 cc MODEL



- | | | |
|------------------------------|-------------------------|--|
| (1) Accelerator pedal | (14) Pedal bracket | (27) Clutch cable clamp |
| (2) Bushing | (15) Stop light switch | (28) Clutch cable |
| (3) Holder | (16) Brake pedal | (29) Mass damper |
| (4) Accelerator bracket | (17) Spacer | (30) Clutch switch (Starter interlock) |
| (5) Stopper | (18) Snap pin | |
| (6) Clip | (19) Brake pedal pad | |
| (7) Accelerator spring | (20) Clevis pin | |
| (8) Accelerator pedal spring | (21) Brake pedal spring | |
| (9) Spring pin | (22) Washer | |
| (10) Accelerator pedal pad | (23) Clutch pedal pad | |
| (11) Accelerator stopper | (24) Clutch pedal | |
| (12) Clip | (25) Bushing assist | |
| (13) Accelerator plate | (26) Spring assist | |

Tightening torque: N-m (kg-m, ft-lb)

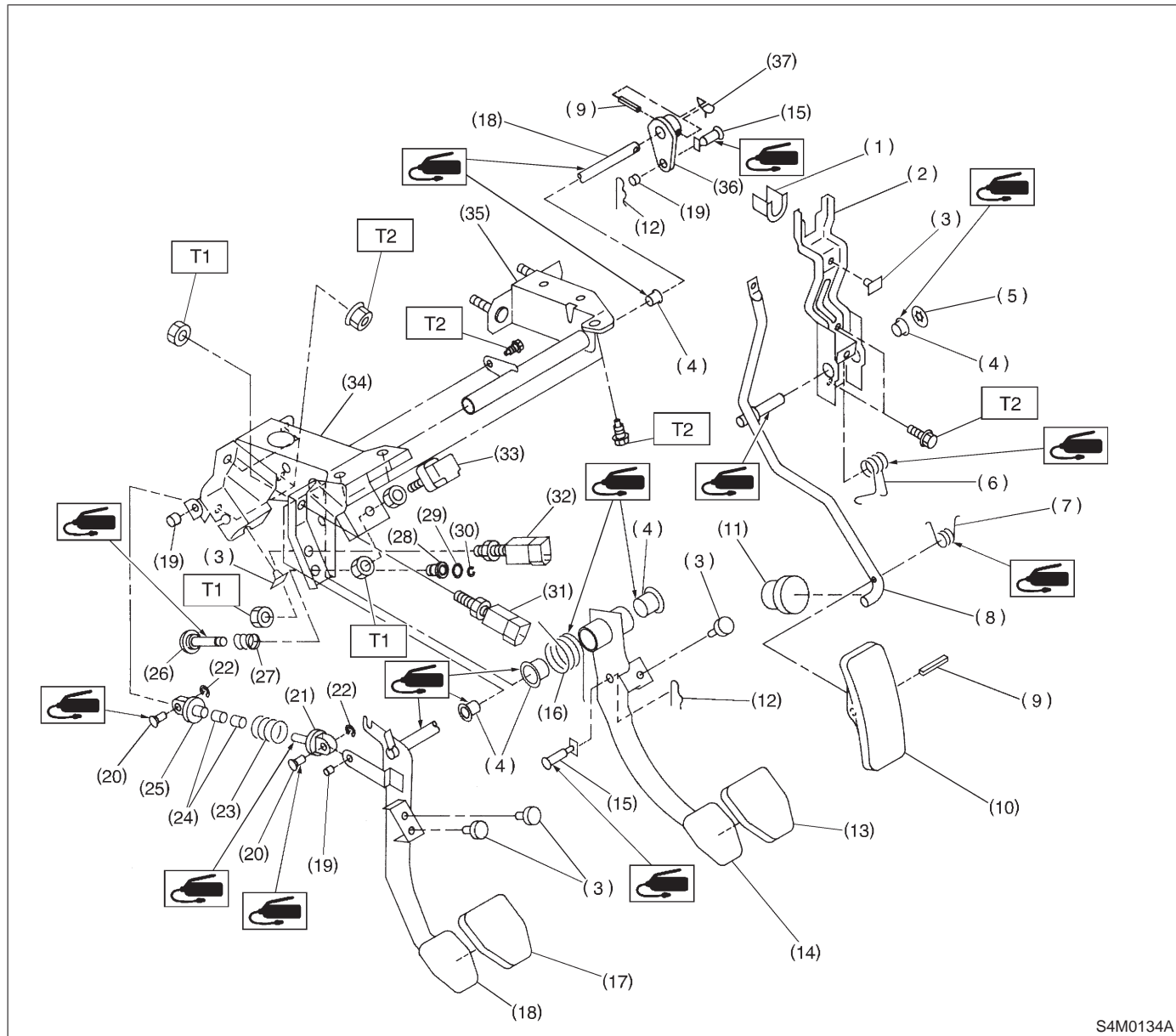
T1: 5.9±1.5 (0.60±0.15, 4.3±1.1)

T2: 8±2 (0.8±0.2, 5.8±1.4)

T3: 18±5 (1.8±0.5, 13.0±3.6)

T4: 29±7 (3.0±0.7, 21.7±5.1)

2. 2500 cc MODEL



S4M0134A

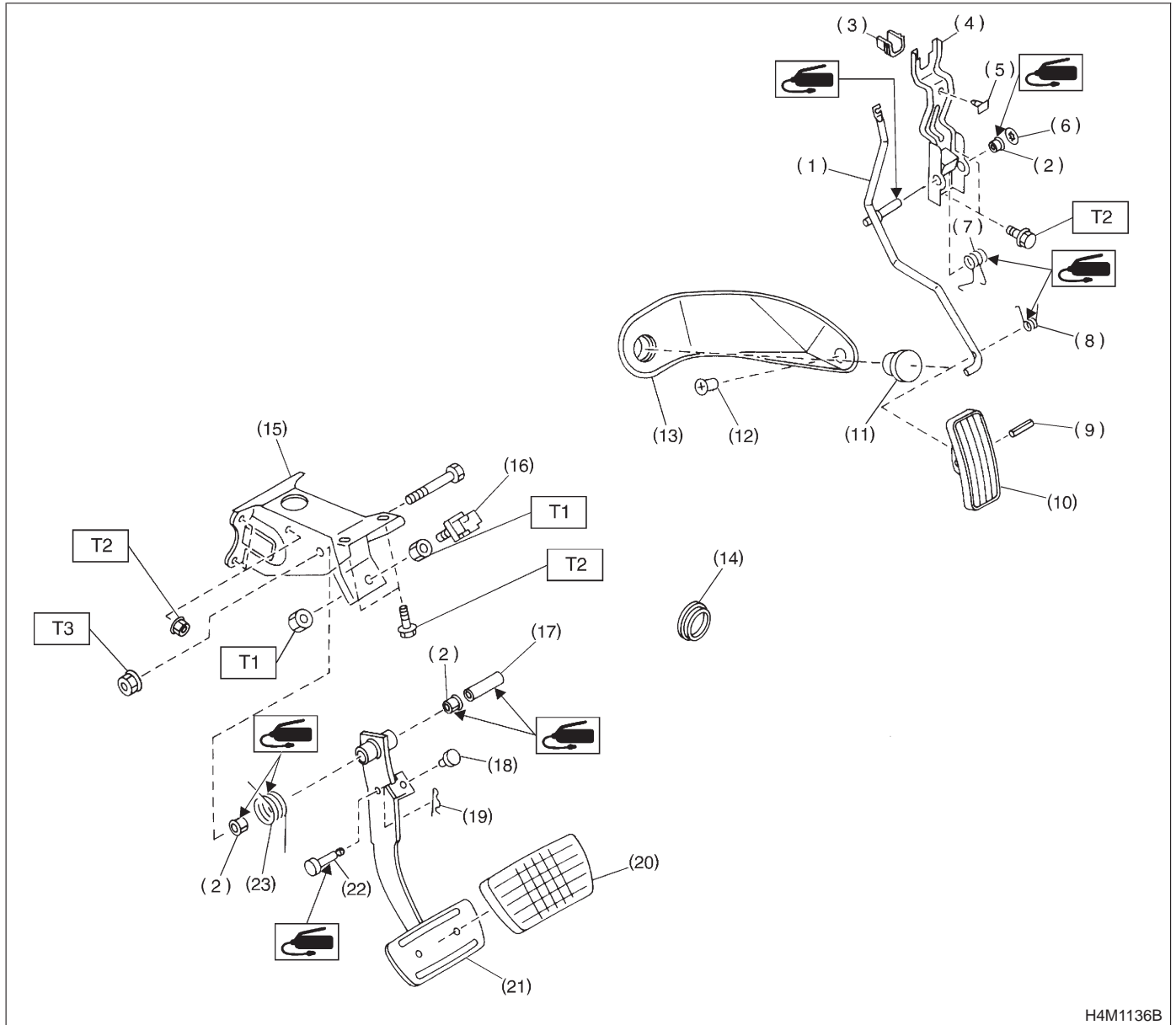
- | | | |
|------------------------------|-------------------------|--|
| (1) Holder | (16) Brake pedal spring | (31) Clutch switch (Starter interlock) |
| (2) Accelerator bracket | (17) Clutch pedal pad | (32) Clutch switch (With cruise control) |
| (3) Stopper | (18) Clutch pedal | (33) Stop light switch |
| (4) Bushing | (19) Bushing C | (34) Pedal bracket |
| (5) Clip | (20) Clutch clevis pin | (35) Clutch master cylinder bracket |
| (6) Accelerator spring | (21) Assist rod A | (36) Lever |
| (7) Accelerator pedal spring | (22) Clip | (37) Lock wire |
| (8) Accelerator pedal | (23) Assist spring | |
| (9) Spring pin | (24) Assist bushing | |
| (10) Accelerator pedal pad | (25) Assist rod B | |
| (11) Accelerator stopper | (26) Rod S | |
| (12) Snap pin | (27) Spring S | |
| (13) Brake pedal pad | (28) Bushing S | |
| (14) Brake pedal | (29) O-ring | |
| (15) Clevis pin | (30) Clip | |

Tightening torque: N-m (kg-m, ft-lb)

T1: 8±2 (0.8±0.2, 5.8±1.4)

T2: 18±5 (1.8±0.5, 13.0±3.6)

B: AT MODEL



H4M1136B

- | | |
|------------------------------|--------------------------|
| (1) Accelerator pedal | (11) Accelerator stopper |
| (2) Bushing | (12) Clip |
| (3) Holder | (13) Accelerator plate |
| (4) Accelerator bracket | (14) Plug |
| (5) Stopper | (15) Pedal bracket |
| (6) Clip | (16) Stop light switch |
| (7) Accelerator spring | (17) Spacer |
| (8) Accelerator pedal spring | (18) Stopper |
| (9) Spring pin | (19) Snap pin |
| (10) Accelerator pedal | (20) Brake pedal pad |

- | |
|-------------------------|
| (21) Brake pedal |
| (22) Clevis pin |
| (23) Brake pedal spring |

Tightening torque: N-m (kg-m, ft-lb)

T1: 8±2 (0.8±0.2, 5.8±1.4)

T2: 18±5 (1.8±0.5, 13.0±3.6)

T3: 29±7 (3.0±0.7, 21.7±5.1)