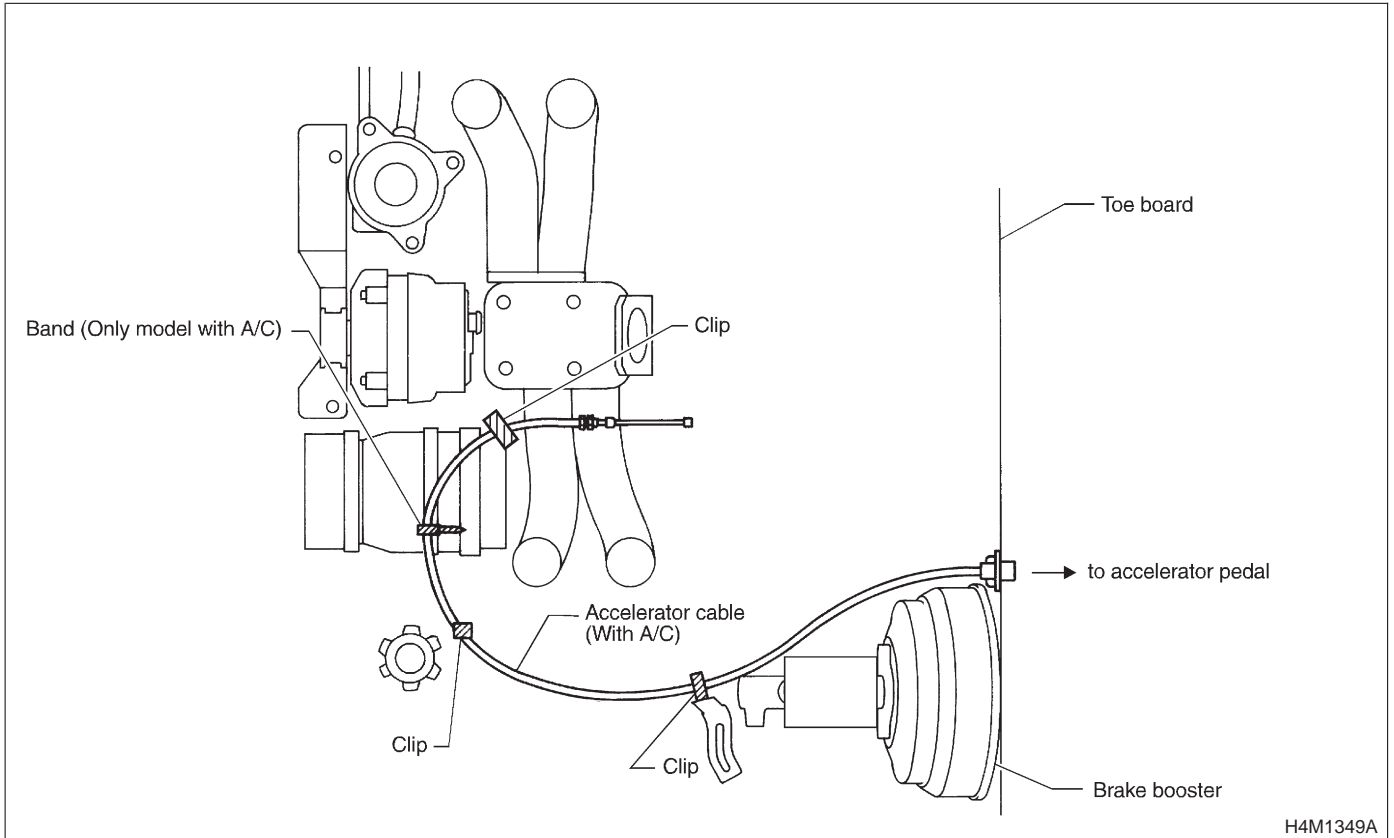
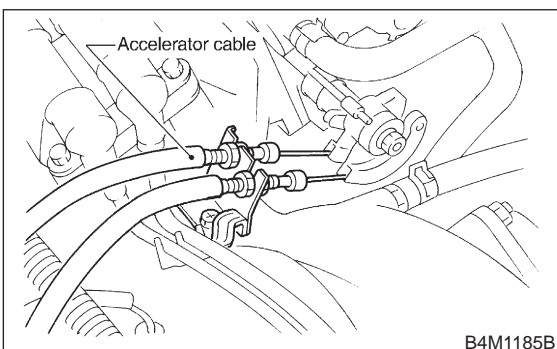


3. Accelerator Cable

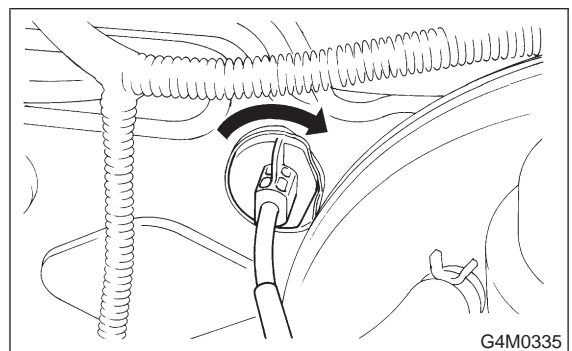
A: REMOVAL



- 1) Disconnect accelerator cable from connector inside engine compartment first.
- 2) Remove lock nut from accelerator cable bracket.
- 3) Separate accelerator cable from bracket, then unlock inner cable.



- 7) Working inside engine compartment, remove cable connection by turning toe board clockwise.



- 8) Pull out the cable from the toe board hole.

- 4) Remove cable end from throttle cam using your fingertips.

CAUTION:
Be careful not to bend inner cable.

- 5) Disconnect cable end from accelerator cable bracket inside driver compartment.
- 6) Remove clip inside engine compartment.

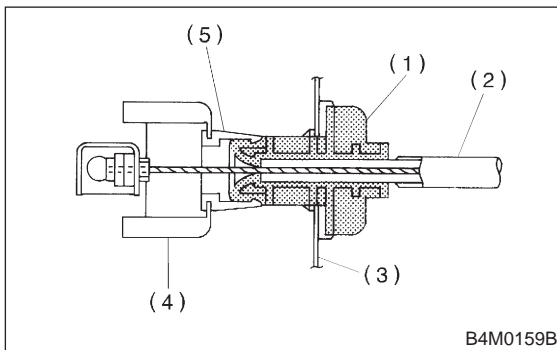
B: INSTALLATION

1) Installation is in the reverse order of removal procedures.

CAUTION:

- Be careful not to kink accelerator cable.
- Make sure that holder and casing cap are securely connected.

2) Adjust after cable installation. <Ref. to 4-5 [W1A3].>



- (1) Casing cap
- (2) Accelerator cable
- (3) Toe board
- (4) Accelerator pedal bracket
- (5) Holder