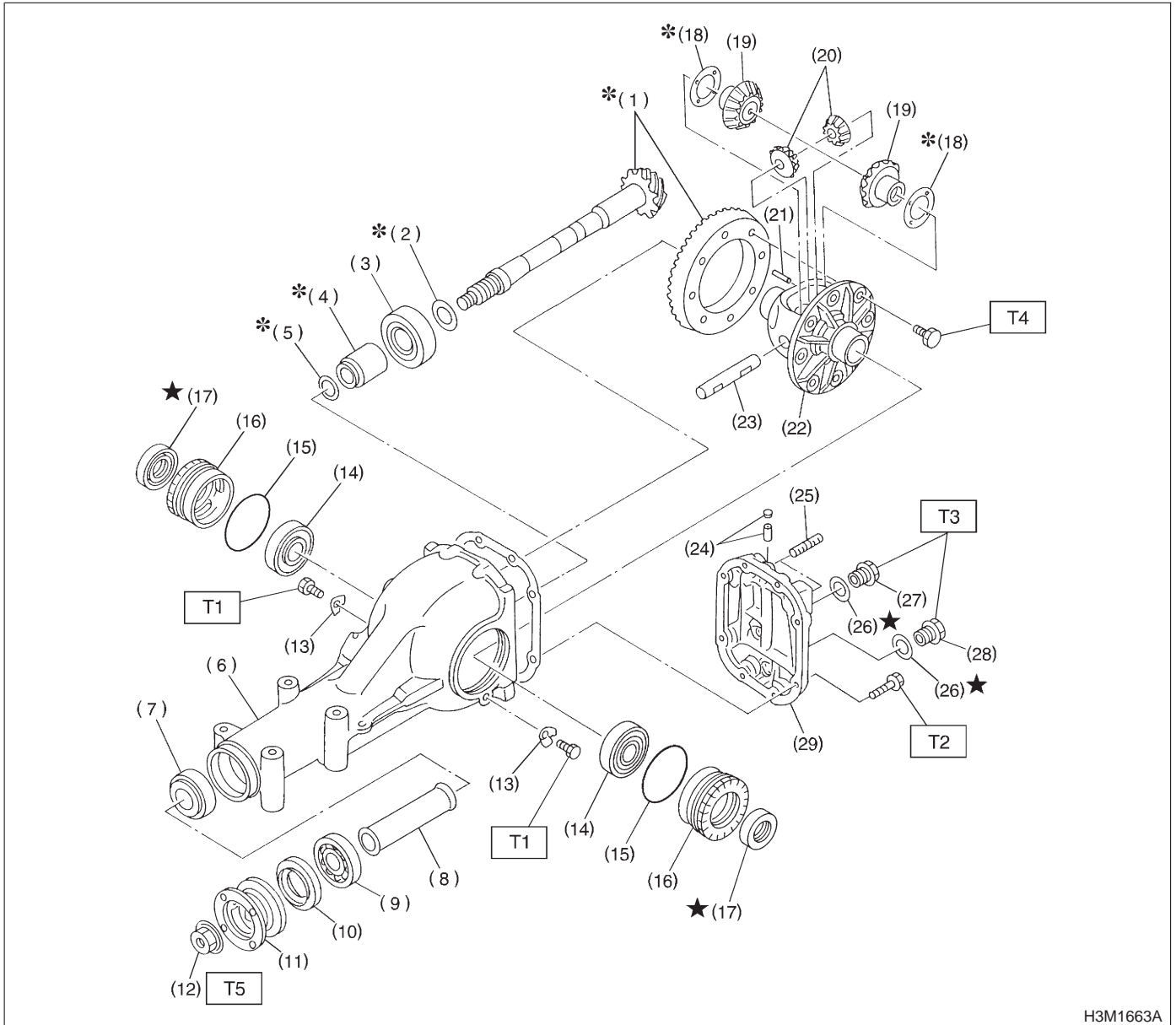


## 2. Rear Differential

### A: VA-TYPE



H3M1663A

- |                                      |                              |                      |
|--------------------------------------|------------------------------|----------------------|
| (1) Pinion crown gear set            | (13) Lock plate              | (26) Gasket          |
| (2) Pinion height adjusting shim     | (14) Side bearing            | (27) Oil filler plug |
| (3) Rear bearing                     | (15) O-ring                  | (28) Oil drain plug  |
| (4) Bearing preload adjusting spacer | (16) Axle shaft holder       | (29) Rear cover      |
| (5) Bearing preload adjusting washer | (17) Side oil seal           |                      |
| (6) Differential carrier             | (18) Side gear thrust washer |                      |
| (7) Front bearing                    | (19) Side gear               |                      |
| (8) Collar                           | (20) Pinion mate gear        |                      |
| (9) Pilot bearing                    | (21) Pinion shaft lock pin   |                      |
| (10) Front oil seal                  | (22) Differential case       |                      |
| (11) Companion flange                | (23) Pinion mate shaft       |                      |
| (12) Self-locking nut                | (24) Air breather cap        |                      |
|                                      | (25) Stud bolt               |                      |

**Tightening torque: N·m (kg·m, ft·lb)**

**T1: 25±3 (2.5±0.3, 18.1±2.2)**

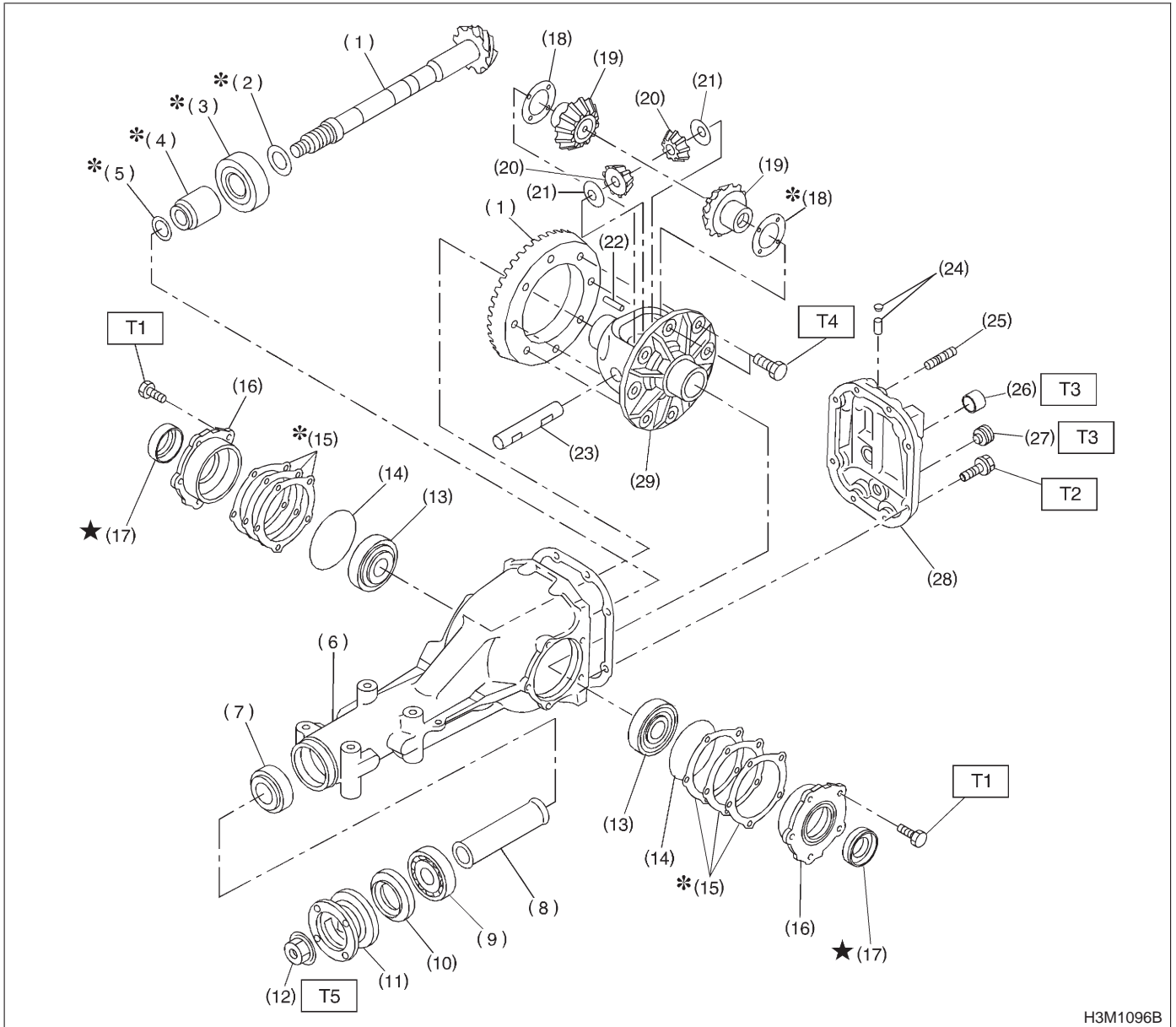
**T2: 25±2 (2.5±0.2, 18.1±1.4)**

**T3: 34±4 (3.5±0.4, 25.3±2.9)**

**T4: 62±5 (6.3±0.5, 45.6±3.6)**

**T5: 188±26 (19.2±2.7, 139±20)**

B: T-TYPE



H3M1096B

- |                                      |                                 |                        |
|--------------------------------------|---------------------------------|------------------------|
| (1) Pinion crown gear set            | (14) O-ring                     | (28) Rear cover        |
| (2) Pinion height adjusting washer   | (15) Side bearing retainer shim | (29) Differential case |
| (3) Rear bearing                     | (16) Side bearing retainer      |                        |
| (4) Bearing preload adjusting spacer | (17) Side oil seal              |                        |
| (5) Bearing preload adjusting washer | (18) Side gear thrust washer    |                        |
| (6) Differential carrier             | (19) Side gear                  |                        |
| (7) Front bearing                    | (20) Pinion mate gear           |                        |
| (8) Spacer                           | (21) Pinion mate gear washer    |                        |
| (9) Pilot bearing                    | (22) Pinion shaft lock pin      |                        |
| (10) Front oil seal                  | (23) Pinion mate shaft          |                        |
| (11) Companion flange                | (24) Air breather cap           |                        |
| (12) Self-locking nut                | (25) Stud bolt                  |                        |
| (13) Side bearing                    | (26) Oil filler plug            |                        |
|                                      | (27) Oil drain plug             |                        |

**Tightening torque: N-m (kg-m, ft-lb)**

**T1: 10.3±1.5 (1.05±0.15, 7.6±1.1)**

**T2: 29.4±4.9 (3.00±0.50, 21.7±3.6)**

**T3: 44.1±3.9 (4.50±0.40, 32.5±2.9)**

**T4: 103.0±9.8 (10.50±1.00, 75.9±7.2)**

**T5: 181.4±14.7 (18.50±1.50, 133.8±10.8)**