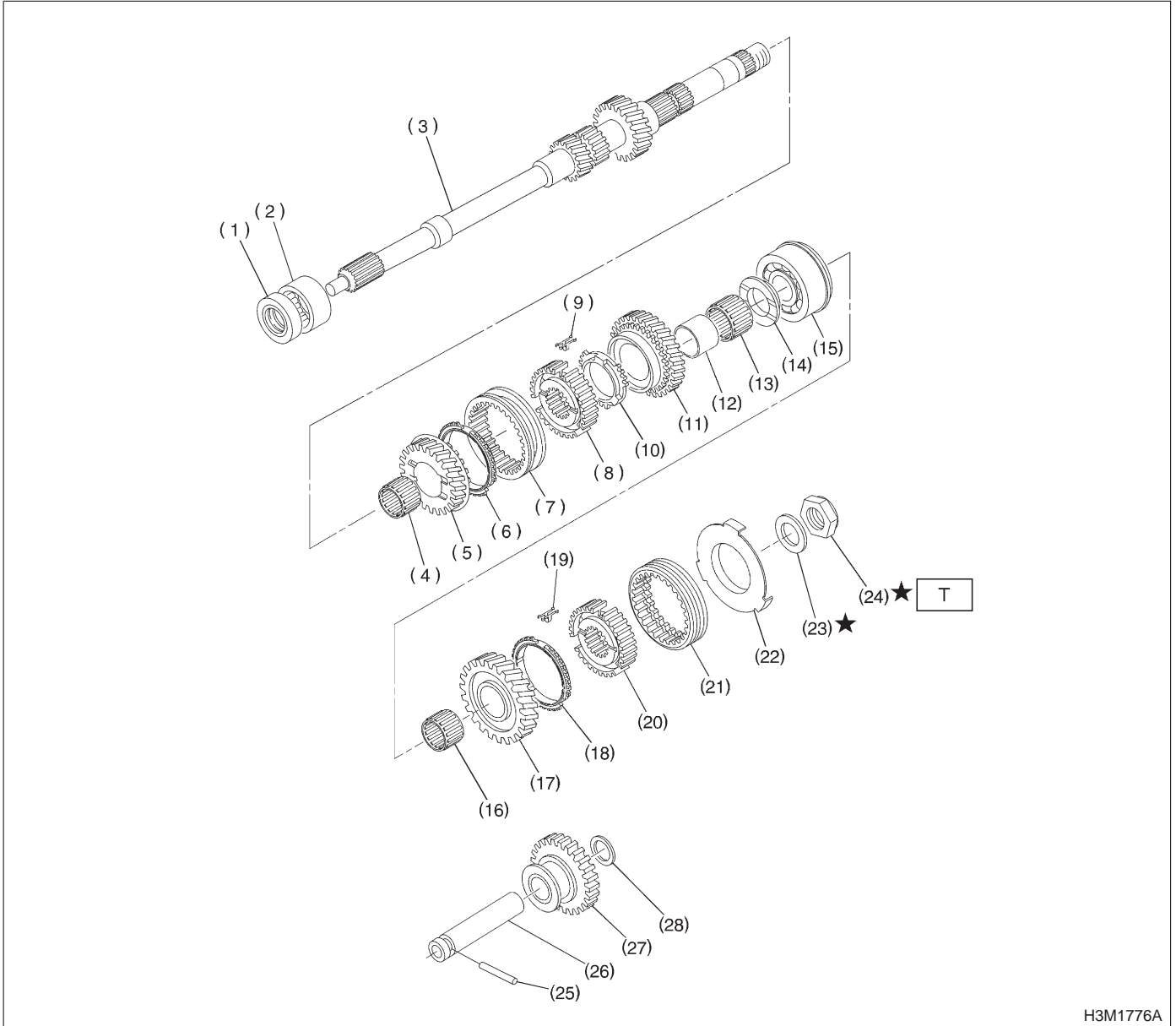


3. Main Shaft Assembly

A: 2200 cc MODEL



H3M1776A

- | | | |
|-----------------------------------|------------------------------------|-------------------------------|
| (1) Oil seal | (12) 4th needle bearing race | (23) Lock washer |
| (2) Needle bearing | (13) Needle bearing | (24) Lock nut |
| (3) Transmission main shaft | (14) 4th gear thrust washer | (25) Straight pin |
| (4) Needle bearing | (15) Ball bearing | (26) Reverse idler gear shaft |
| (5) 3rd drive gear | (16) Needle bearing | (27) Reverse idler gear |
| (6) Baulk ring | (17) 5th drive gear | (28) Washer |
| (7) Coupling sleeve (3rd-4th) | (18) Baulk ring (5th) | |
| (8) Synchronizer hub (3rd-4th) | (19) Shifting insert key (5th-Rev) | |
| (9) Shifting insert key (3rd-4th) | (20) Synchronizer hub (5th-Rev) | |
| (10) Baulk ring (4th) | (21) Coupling sleeve (5th-Rev) | |
| (11) 4th drive gear | (22) Insert stopper plate | |

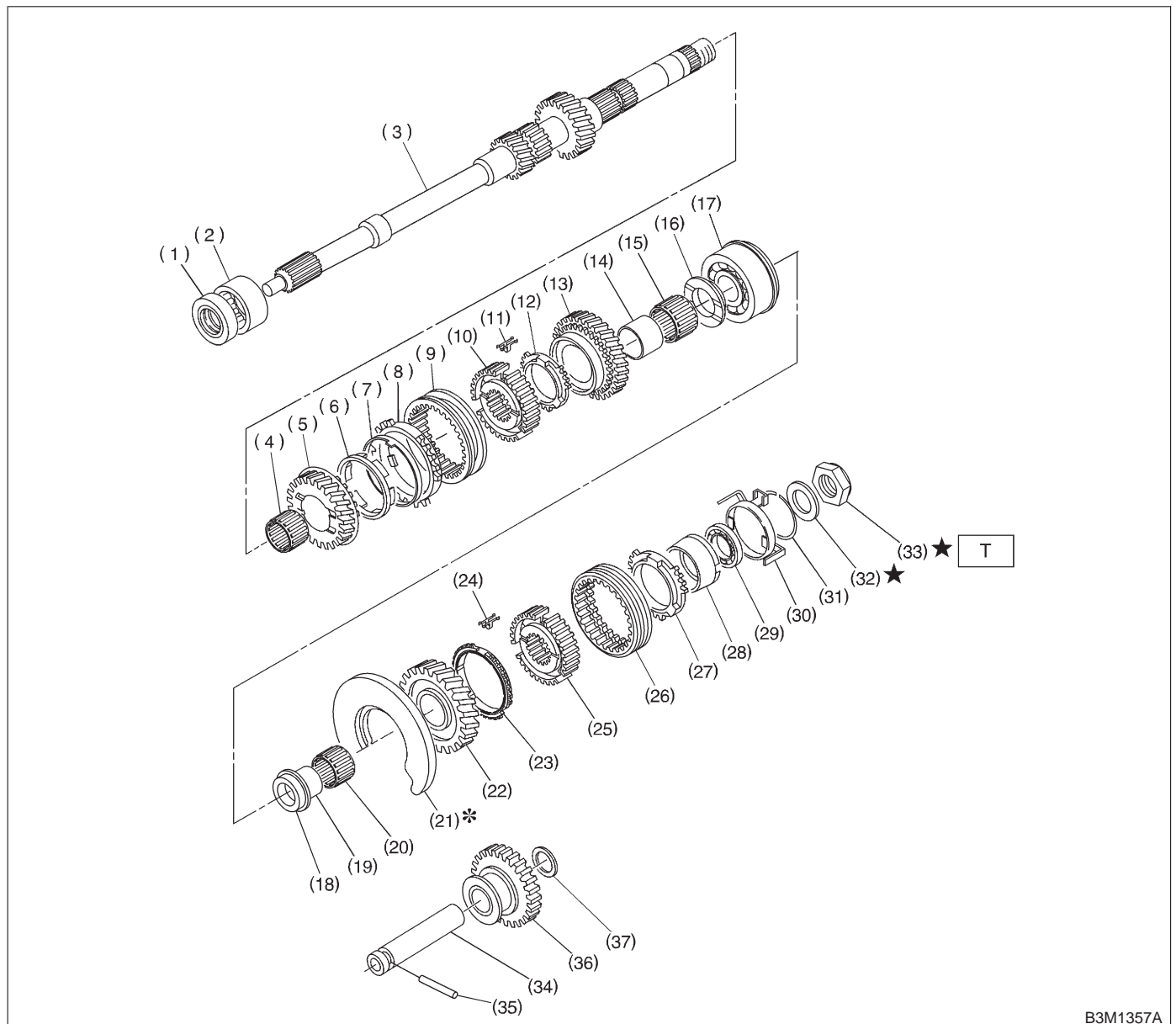
Tightening torque: N·m (kg·m, ft·lb)
T: 118±6 (12.0±0.6, 86.8±4.3)

3-1 [C3B0]

3. Main Shaft Assembly

COMPONENT PARTS

B: 2500 cc MODEL



B3M1357A

- | | | |
|------------------------------------|------------------------------------|-------------------------------|
| (1) Oil seal | (15) Needle bearing | (29) Ball bearing |
| (2) Needle bearing | (16) 4th gear thrust washer | (30) Synchro cone stopper |
| (3) Transmission main shaft | (17) Ball bearing | (31) Snap ring |
| (4) Needle bearing | (18) 5th gear thrust washer | (32) Lock washer |
| (5) 3rd drive gear | (19) 5th needle bearing race | (33) Lock nut |
| (6) Inner baulk ring | (20) Needle bearing | (34) Straight pin |
| (7) Synchro cone (3rd) | (21)* Main shaft rear plate | (35) Reverse idler gear shaft |
| (8) Outer baulk ring | (22) 5th drive gear | (36) Reverse idler gear |
| (9) Coupling sleeve (3rd-4th) | (23) 5th baulk ring | (37) Washer |
| (10) Synchronizer hub (3rd-4th) | (24) Shifting insert key (5th-Rev) | |
| (11) Shifting insert key (3rd-4th) | (25) Synchronizer hub (5th-Rev) | |
| (12) 4th baulk ring | (26) Coupling sleeve (5th-Rev) | |
| (13) 4th drive gear | (27) Rev baulk ring | |
| (14) 4th needle bearing race | (28) Synchro cone (Rev) | |

Tightening torque: N-m (kg-m, ft-lb)
T: 118±6 (12.0±0.6, 86.8±4.3)