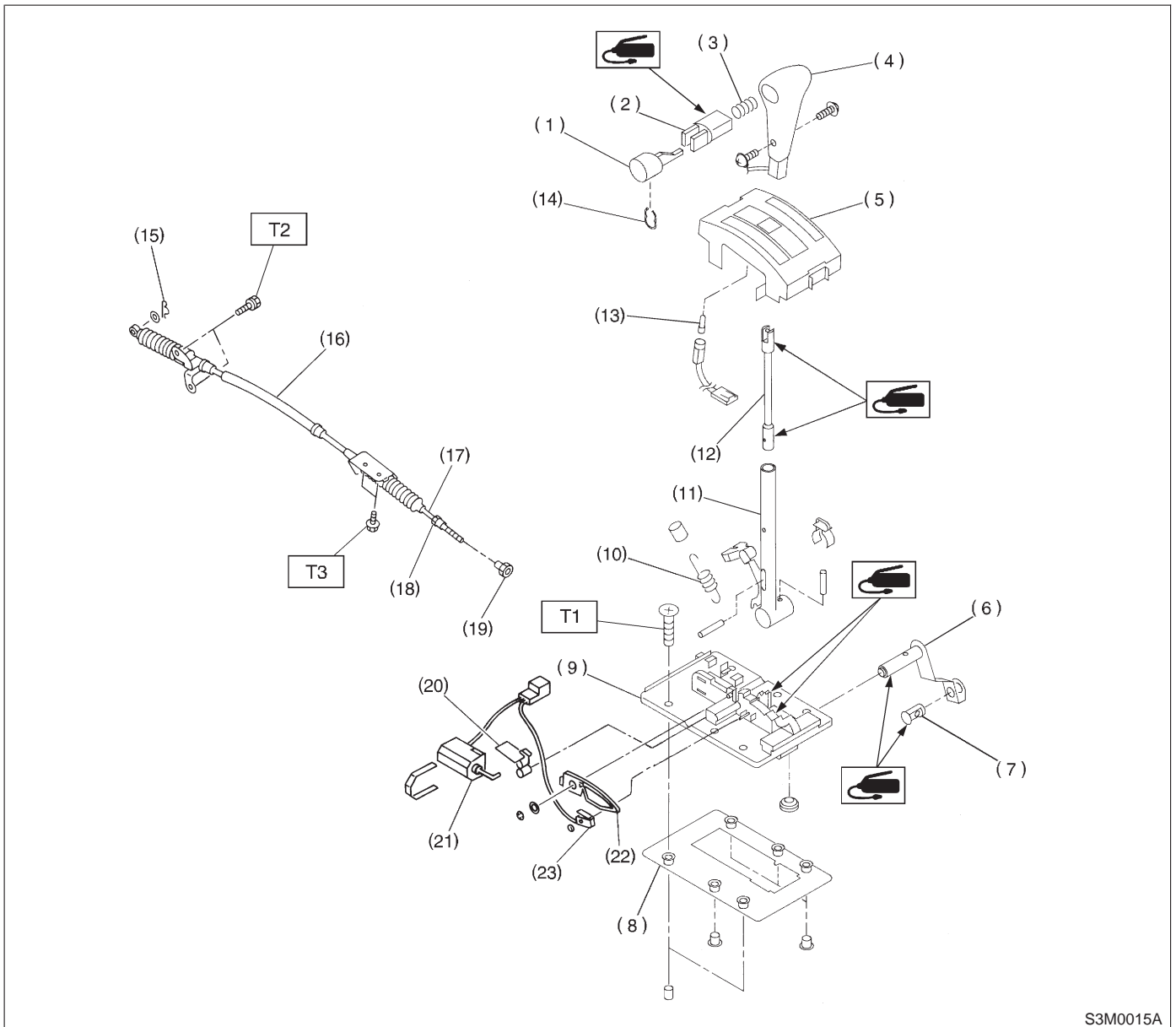


2. Automatic Transmission



S3M0015A

- | | | |
|--------------------------|---------------------------|--------------------------|
| (1) Button A | (11) Selector lever upper | (21) Shift-lock solenoid |
| (2) Button B | (12) Rod | (22) Lock arm |
| (3) Spring (button) | (13) Indicator light bulb | (23) "P" position switch |
| (4) Grip | (14) Retainer spring | |
| (5) Indicator cover | (15) Snap pin | |
| (6) Selector lever lower | (16) Outer cable | |
| (7) Pin | (17) Inner cable | |
| (8) Packing | (18) Nut (front) | |
| (9) Plate | (19) Nut (rear) | |
| (10) Detent spring | (20) Lock plate | |

Tightening torque: N-m (kg-m, ft-lb)

T1: 5.9±1.5 (0.6±0.15, 4.3±1.1)

T2: 12±3 (1.2±0.3, 8.7±2.2)

T3: 25±7 (2.5±0.7, 18.1±5.1)